



[Go to Product page](#)

Datasheet for ABIN1534645

anti-Apolipoprotein L 4 antibody (AA 301-350)

3 Images

Overview

Quantity:	100 µL
Target:	Apolipoprotein L 4 (APOL4)
Binding Specificity:	AA 301-350
Reactivity:	Human
Host:	Rabbit
Clonality:	Polyclonal
Conjugate:	This Apolipoprotein L 4 antibody is un-conjugated
Application:	Western Blotting (WB), ELISA, Immunohistochemistry (IHC), Immunofluorescence (IF)

Product Details

Immunogen:	The antiserum was produced against synthesized peptide derived from human APOL4.
Isotype:	IgG
Specificity:	APOL4 Antibody detects endogenous levels of total APOL4 protein.
Purification:	The antibody was purified from rabbit antiserum by affinity-chromatography using immunogen.
Purity:	> 95 %

Target Details

Target:	Apolipoprotein L 4 (APOL4)
Alternative Name:	APOL4 (APOL4 Products)
Background:	Synonyms: Apolipoprotein-L4, Apolipoprotein L-IV, ApoL-IV

Target Details

NCBI Gene Symbol: APOL4

Molecular Weight: 39 kDa

Gene ID: 80832

OMIM: 607254

UniProt: [Q9BPW4](#)

Application Details

Application Notes: WB: 1:500~1:1000 IHC: 1:50~1:100 IF: 1:100~1:500 ELISA: 1:20000

Comment: Unigene-Number: Hs.115099 (NCBI Gene Symbol: APOL4)

Restrictions: For Research Use only

Handling

Format: Liquid

Concentration: 1 mg/mL

Buffer: phosphate buffered saline (without Mg²⁺ and Ca²⁺), pH 7.4, 150 mM NaCl, 0.02 % sodium azide and 50 % glycerol.

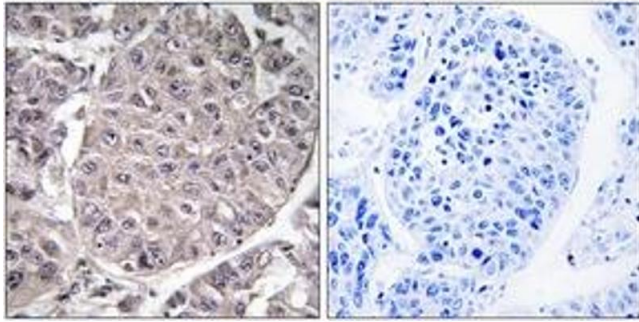
Preservative: Sodium azide

Precaution of Use: This product contains sodium azide: a POISONOUS AND HAZARDOUS SUBSTANCE which should be handled by trained staff only.

Storage: -20 °C

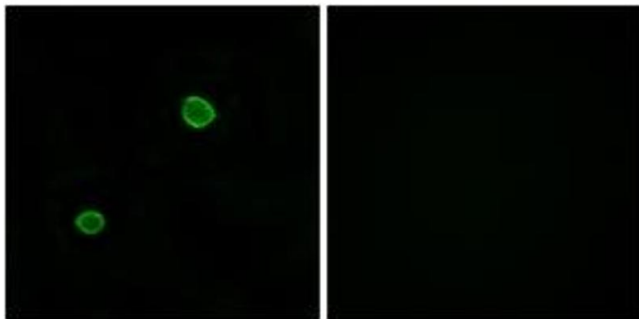
Storage Comment: Stable at -20°C for at least 1 year.

Expiry Date: 12 months



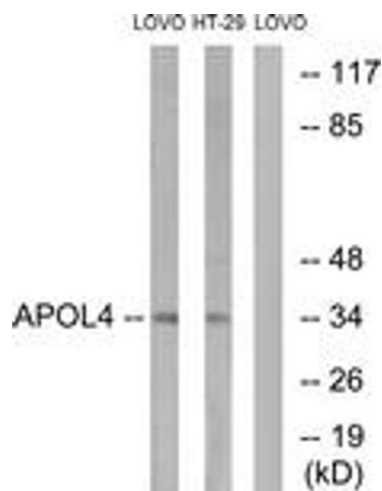
Immunohistochemistry

Image 1. Immunohistochemistry analysis of paraffin-embedded human liver carcinoma tissue, using APOL4 Antibody. The picture on the right is treated with the synthesized peptide.



Immunofluorescence

Image 2. Immunofluorescence analysis of MCF7 cells, using APOL4 Antibody. The picture on the right is treated with the synthesized peptide.



Western Blotting

Image 3. Western blot analysis of extracts from LOVO/HT-29 cells, using APOL4 Antibody. The lane on the right is treated with the synthesized peptide.