

Datasheet for ABIN1534649
anti-ARFIP1 antibody (AA 271-320)[Go to Product page](#)

2 Images

Overview

Quantity:	100 µg
Target:	ARFIP1
Binding Specificity:	AA 271-320
Reactivity:	Human, Rat, Mouse
Host:	Rabbit
Clonality:	Polyclonal
Conjugate:	This ARFIP1 antibody is un-conjugated
Application:	Western Blotting (WB), ELISA, Immunofluorescence (IF)

Product Details

Immunogen:	The antiserum was produced against synthesized peptide derived from human ARFIP1.
Isotype:	IgG
Specificity:	ARFIP1 Antibody detects endogenous levels of total ARFIP1 protein.
Purification:	The antibody was purified from rabbit antiserum by affinity-chromatography using immunogen.
Purity:	> 95 %

Target Details

Target:	ARFIP1
Alternative Name:	ARFIP1 (ARFIP1 Products)
Background:	Synonyms: Arfaptin-1, ADP-ribosylation factor-interacting protein 1

Target Details

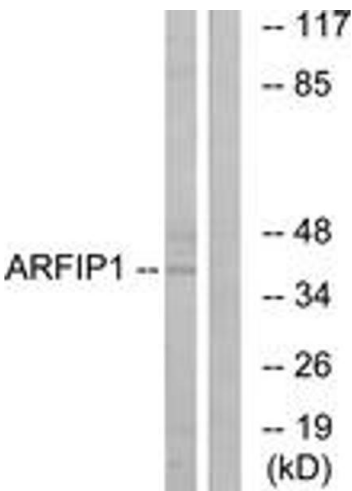
	NCBI Gene Symbol: ARFIP1
Molecular Weight:	41 kDa
Gene ID:	27236
OMIM:	605928
UniProt:	P53367

Application Details

Application Notes:	WB: 1:500~1:1000 IF: 1:100~1:500 ELISA: 1:40000
Comment:	Unigene-Number: Hs.416089 (NCBI Gene Symbol: ARFIP1)
Restrictions:	For Research Use only

Handling

Format:	Liquid
Concentration:	1 mg/mL
Buffer:	phosphate buffered saline (without Mg ²⁺ and Ca ²⁺), pH 7.4, 150 mM NaCl, 0.02 % sodium azide and 50 % glycerol.
Preservative:	Sodium azide
Precaution of Use:	This product contains sodium azide: a POISONOUS AND HAZARDOUS SUBSTANCE which should be handled by trained staff only.
Storage:	-20 °C
Storage Comment:	Stable at -20°C for at least 1 year.
Expiry Date:	12 months



Western Blotting

Image 1. Western blot analysis of extracts from Jurkat cells, using ARFIP1 Antibody. The lane on the right is treated with the synthesized peptide.



Immunofluorescence

Image 2. Immunofluorescence analysis of A549 cells, using ARFIP1 Antibody. The picture on the right is treated with the synthesized peptide.