

Datasheet for ABIN1534650  
**anti-ARMC6 antibody (AA 431-480)**[Go to Product page](#)

## 2 Images

## Overview

Quantity:	100 µg
Target:	ARMC6
Binding Specificity:	AA 431-480
Reactivity:	Human, Mouse, Rat
Host:	Rabbit
Clonality:	Polyclonal
Conjugate:	This ARMC6 antibody is un-conjugated
Application:	Western Blotting (WB), Immunofluorescence (IF), ELISA

## Product Details

Immunogen:	The antiserum was produced against synthesized peptide derived from human ARMC6.
Isotype:	IgG
Specificity:	ARMC6 Antibody detects endogenous levels of total ARMC6 protein.
Purification:	The antibody was purified from rabbit antiserum by affinity-chromatography using immunogen.
Purity:	> 95 %

## Target Details

Target:	ARMC6
Alternative Name:	ARMC6 ( <a href="#">ARMC6 Products</a> )
Background:	Synonyms: Armadillo repeat-containing protein 6

## Target Details

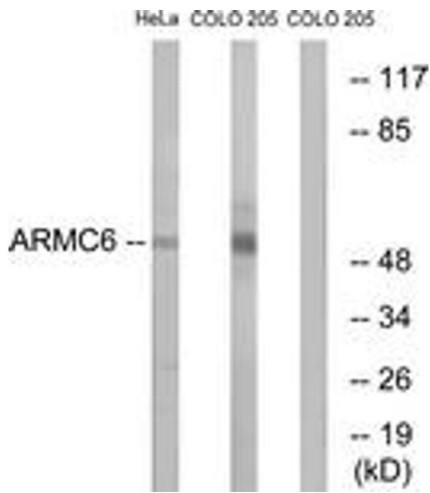
	NCBI Gene Symbol: ARMC6
Molecular Weight:	54 kDa
Gene ID:	93436
UniProt:	<a href="#">Q6NXE6</a>

## Application Details

Application Notes:	WB: 1:500~1:1000 IF: 1:100~1:500 ELISA: 1:10000
Comment:	Unigene-Number: Hs.77876 (NCBI Gene Symbol: ARMC6)
Restrictions:	For Research Use only

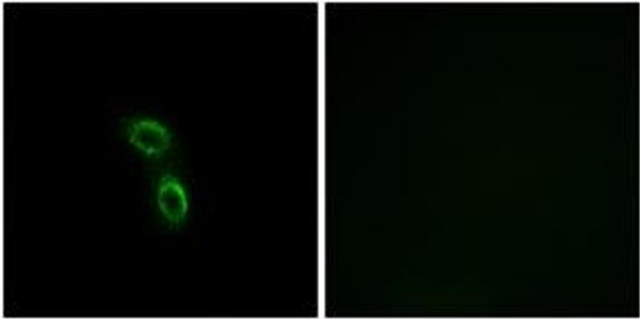
## Handling

Format:	Liquid
Concentration:	1 mg/mL
Buffer:	phosphate buffered saline (without Mg <sup>2+</sup> and Ca <sup>2+</sup> ), pH 7.4, 150 mM NaCl, 0.02 % sodium azide and 50 % glycerol.
Preservative:	Sodium azide
Precaution of Use:	This product contains sodium azide: a POISONOUS AND HAZARDOUS SUBSTANCE which should be handled by trained staff only.
Storage:	-20 °C
Storage Comment:	Stable at -20°C for at least 1 year.
Expiry Date:	12 months



### Western Blotting

**Image 1.** Western blot analysis of extracts from HeLa/COLO cells, using ARMC6 Antibody. The lane on the right is treated with the synthesized peptide.



### Immunofluorescence

**Image 2.** Immunofluorescence analysis of A549 cells, using ARMC6 Antibody. The picture on the right is treated with the synthesized peptide.