



[Go to Product page](#)

Datasheet for ABIN1534662  
**anti-ATP5I antibody (AA 20-69)**

1 Image

### Overview

Quantity:	100 µL
Target:	ATP5I
Binding Specificity:	AA 20-69
Reactivity:	Human
Host:	Rabbit
Clonality:	Polyclonal
Conjugate:	This ATP5I antibody is un-conjugated
Application:	ELISA, Western Blotting (WB)

### Product Details

Immunogen:	The antiserum was produced against synthesized peptide derived from human ATP5I.
Isotype:	IgG
Specificity:	ATP5I Antibody detects endogenous levels of total ATP5I protein.
Purification:	The antibody was purified from rabbit antiserum by affinity-chromatography using immunogen.
Purity:	> 95 %

### Target Details

Target:	ATP5I
Alternative Name:	ATP5I ( <a href="#">ATP5I Products</a> )
Background:	Synonyms: ATP synthase e chain, mitochondrial, ATP5K, F1F0-ATP synthase

## Target Details

---

NCBI Gene Symbol: ATP5I

Molecular Weight: 7 kDa

Gene ID: 521

OMIM: 601519

UniProt: [P56385](#)

Pathways: [Proton Transport, Ribonucleoside Biosynthetic Process](#)

## Application Details

---

Application Notes: WB: 1:500~1:1000 ELISA: 1:20000

Comment: Unigene-Number: Hs.85539 (NCBI Gene Symbol: ATP5I)

Restrictions: For Research Use only

## Handling

---

Format: Liquid

Concentration: 1 mg/mL

Buffer: phosphate buffered saline (without Mg<sup>2+</sup> and Ca<sup>2+</sup>), pH 7.4, 150 mM NaCl, 0.02 % sodium azide and 50 % glycerol.

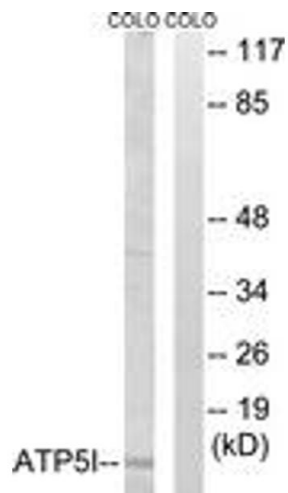
Preservative: Sodium azide

Precaution of Use: This product contains sodium azide: a POISONOUS AND HAZARDOUS SUBSTANCE which should be handled by trained staff only.

Storage: -20 °C

Storage Comment: Stable at -20°C for at least 1 year.

Expiry Date: 12 months



### Western Blotting

**Image 1.** Western blot analysis of extracts from COLO cells, using ATP5I Antibody. The lane on the right is treated with the synthesized peptide.