

Datasheet for ABIN1534668
anti-ATP5S antibody (AA 21-70)



[Go to Product page](#)

1 Image

Overview

Quantity:	100 µL
Target:	ATP5S
Binding Specificity:	AA 21-70
Reactivity:	Human, Mouse
Host:	Rabbit
Clonality:	Polyclonal
Conjugate:	This ATP5S antibody is un-conjugated
Application:	Western Blotting (WB), ELISA

Product Details

Immunogen:	The antiserum was produced against synthesized peptide derived from human ATP5S.
Isotype:	IgG
Specificity:	ATP5S Antibody detects endogenous levels of total ATP5S protein.
Purification:	The antibody was purified from rabbit antiserum by affinity-chromatography using immunogen.
Purity:	> 95 %

Target Details

Target:	ATP5S
Alternative Name:	ATP5S (ATP5S Products)
Background:	Synonyms: ATP synthase subunit s, mitochondrial, ATP synthase-coupling factor B,

Target Details

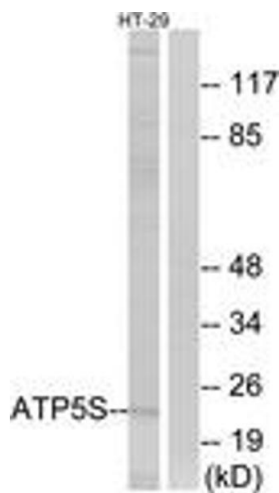
	Mitochondrial ATP synthase regulatory component factor B NCBI Gene Symbol: ATP5S
Molecular Weight:	24 kDa
Gene ID:	27109
UniProt:	Q99766
Pathways:	Proton Transport , Ribonucleoside Biosynthetic Process

Application Details

Application Notes:	WB: 1:500~1:1000 ELISA: 1:10000
Comment:	Unigene-Number: Hs.438489 (NCBI Gene Symbol: ATP5S)
Restrictions:	For Research Use only

Handling

Format:	Liquid
Concentration:	1 mg/mL
Buffer:	phosphate buffered saline (without Mg2+ and Ca2+), pH 7.4, 150 mM NaCl, 0.02 % sodium azide and 50 % glycerol.
Preservative:	Sodium azide
Precaution of Use:	This product contains sodium azide: a POISONOUS AND HAZARDOUS SUBSTANCE which should be handled by trained staff only.
Storage:	-20 °C
Storage Comment:	Stable at -20°C for at least 1 year.
Expiry Date:	12 months



Western Blotting

Image 1. Western blot analysis of extracts from HT-29 cells, using ATP5S Antibody. The lane on the right is treated with the synthesized peptide.