

Datasheet for ABIN1534682
anti-BAGE4 antibody (AA 9-58)



[Go to Product page](#)

1 Image

Overview

Quantity:	100 µL
Target:	BAGE4
Binding Specificity:	AA 9-58
Reactivity:	Human
Host:	Rabbit
Clonality:	Polyclonal
Conjugate:	This BAGE4 antibody is un-conjugated
Application:	ELISA, Immunohistochemistry (IHC)

Product Details

Immunogen:	The antiserum was produced against synthesized peptide derived from human BAGE4.
Isotype:	IgG
Specificity:	BAGE4 Antibody detects endogenous levels of total BAGE4 protein.
Purification:	The antibody was purified from rabbit antiserum by affinity-chromatography using immunogen.
Purity:	> 95 %

Target Details

Target:	BAGE4
Alternative Name:	BAGE4 (BAGE4 Products)
Background:	Synonyms: Cancer/testis antigen 2.4, CT2.4

Target Details

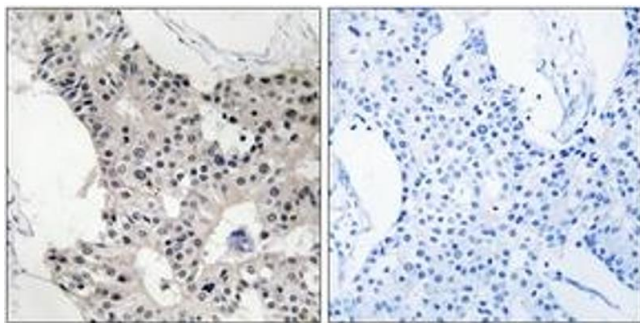
	NCBI Gene Symbol: BAGE4
Molecular Weight:	4 kDa
Gene ID:	85317
UniProt:	Q86Y28

Application Details

Application Notes:	IHC: 1:50~1:100 ELISA: 1:5000
Comment:	Unigene-Number: Hs.545789 (NCBI Gene Symbol: BAGE4)
Restrictions:	For Research Use only

Handling

Format:	Liquid
Concentration:	1 mg/mL
Buffer:	phosphate buffered saline (without Mg2+ and Ca2+), pH 7.4, 150 mM NaCl, 0.02 % sodium azide and 50 % glycerol.
Preservative:	Sodium azide
Precaution of Use:	This product contains sodium azide: a POISONOUS AND HAZARDOUS SUBSTANCE which should be handled by trained staff only.
Storage:	-20 °C
Storage Comment:	Stable at -20°C for at least 1 year.
Expiry Date:	12 months



Immunohistochemistry

Image 1. Immunohistochemistry analysis of paraffin-embedded human breast carcinoma, using BAGE4 Antibody. The picture on the right is treated with the synthesized peptide.