

Datasheet for ABIN1534687  
**anti-GCNT7 antibody (AA 311-360)**[Go to Product page](#)

## 3 Images

## Overview

Quantity:	100 µg
Target:	GCNT7
Binding Specificity:	AA 311-360
Reactivity:	Human
Host:	Rabbit
Clonality:	Polyclonal
Conjugate:	This GCNT7 antibody is un-conjugated
Application:	Western Blotting (WB), ELISA, Immunohistochemistry (IHC), Immunofluorescence (IF)

## Product Details

Immunogen:	The antiserum was produced against synthesized peptide derived from human GCNT7.
Isotype:	IgG
Specificity:	GCNT7 Antibody detects endogenous levels of total GCNT7 protein.
Purification:	The antibody was purified from rabbit antiserum by affinity-chromatography using immunogen.
Purity:	> 95 %

## Target Details

Target:	GCNT7
Alternative Name:	GCNT7 ( <a href="#">GCNT7 Products</a> )
Background:	Synonyms: Beta-1,3-galactosyl-O-glycosyl-glycoprotein beta-1,6-N-

## Target Details

acetylglucosaminyltransferase 7, GCNT7, C20orf105

NCBI Gene Symbol: GCNT7

Molecular Weight: 49 kDa

Gene ID: 140687

UniProt: [Q6ZNI0](#)

## Application Details

Application Notes: WB: 1:500~1:1000 IHC: 1:50~1:100 IF: 1:100~1:500 ELISA: 1:40000

Comment: Unigene-Number: Hs.655916 (NCBI Gene Symbol: GCNT7)

Restrictions: For Research Use only

## Handling

Format: Liquid

Concentration: 1 mg/mL

Buffer: phosphate buffered saline (without Mg<sup>2+</sup> and Ca<sup>2+</sup>), pH 7.4, 150 mM NaCl, 0.02 % sodium azide and 50 % glycerol.

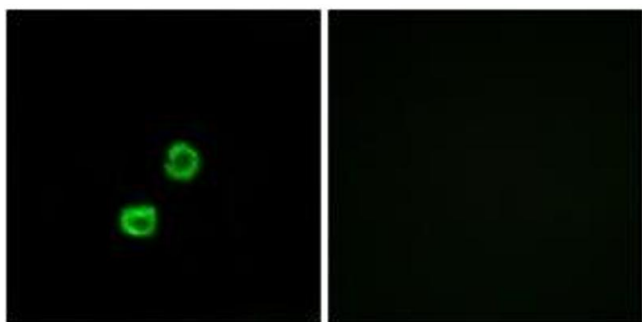
Preservative: Sodium azide

Precaution of Use: This product contains sodium azide: a POISONOUS AND HAZARDOUS SUBSTANCE which should be handled by trained staff only.

Storage: -20 °C

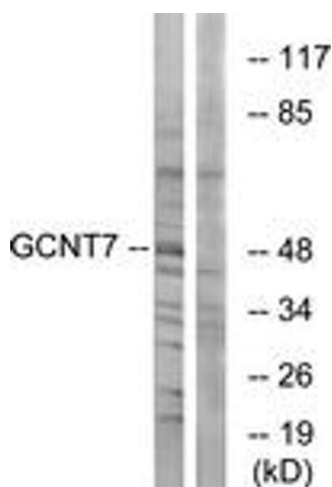
Storage Comment: Stable at -20°C for at least 1 year.

Expiry Date: 12 months



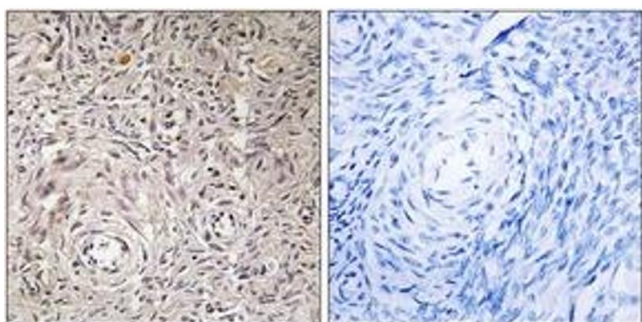
#### Immunofluorescence

**Image 1.** Immunofluorescence analysis of MCF7 cells, using GCNT7 Antibody. The picture on the right is treated with the synthesized peptide.



#### Western Blotting

**Image 2.** Western blot analysis of extracts from K562 cells, using GCNT7 Antibody. The lane on the right is treated with the synthesized peptide.



#### Immunohistochemistry

**Image 3.** Immunohistochemistry analysis of paraffin-embedded human ovary tissue, using GCNT7 Antibody. The picture on the right is treated with the synthesized peptide.