

Datasheet for ABIN1534695  
**anti-SLC27A5 antibody (AA 481-530)**

## 3 Images

[Go to Product page](#)

## Overview

Quantity:	100 µg
Target:	SLC27A5
Binding Specificity:	AA 481-530
Reactivity:	Human
Host:	Rabbit
Clonality:	Polyclonal
Conjugate:	This SLC27A5 antibody is un-conjugated
Application:	Western Blotting (WB), Immunohistochemistry (IHC), ELISA, Immunofluorescence (IF)

## Product Details

Immunogen:	The antiserum was produced against synthesized peptide derived from human SLC27A5.
Isotype:	IgG
Specificity:	SLC27A5 Antibody detects endogenous levels of total SLC27A5 protein.
Purification:	The antibody was purified from rabbit antiserum by affinity-chromatography using immunogen.
Purity:	> 95 %

## Target Details

Target:	SLC27A5
Alternative Name:	SLC27A5 ( <a href="#">SLC27A5 Products</a> )
Background:	Synonyms: Bile acyl-CoA synthetase, BACS, Bile acid-CoA ligase, BA-CoA ligase, BAL, Cholate--

## Target Details

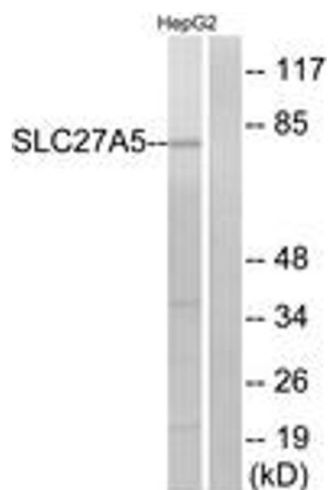
	CoA ligase, Very long-chain acyl-CoA synthetase homolog 2, VLCSH2, VLCS-H2, Very long-chain acyl-CoA synthetase-related protein, VLACS-related, VLACSR, Fatty-acid-coenzyme NCBI Gene Symbol: S27A5
Molecular Weight:	75 kDa
Gene ID:	10998
OMIM:	603314
UniProt:	<a href="#">Q9Y2P5</a>

## Application Details

Application Notes:	WB: 1:500~1:1000 IHC: 1:50~1:100 IF: 1:100~1:500 ELISA: 1:40000
Comment:	Unigene-Number: Hs.292177 (NCBI Gene Symbol: S27A5)
Restrictions:	For Research Use only

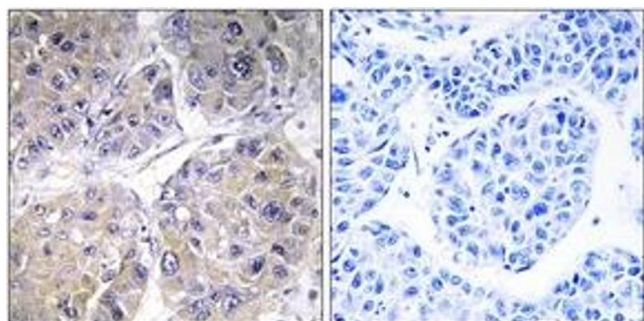
## Handling

Format:	Liquid
Concentration:	1 mg/mL
Buffer:	phosphate buffered saline (without Mg <sup>2+</sup> and Ca <sup>2+</sup> ), pH 7.4, 150 mM NaCl, 0.02 % sodium azide and 50 % glycerol.
Preservative:	Sodium azide
Precaution of Use:	This product contains sodium azide: a POISONOUS AND HAZARDOUS SUBSTANCE which should be handled by trained staff only.
Storage:	-20 °C
Storage Comment:	Stable at -20°C for at least 1 year.
Expiry Date:	12 months



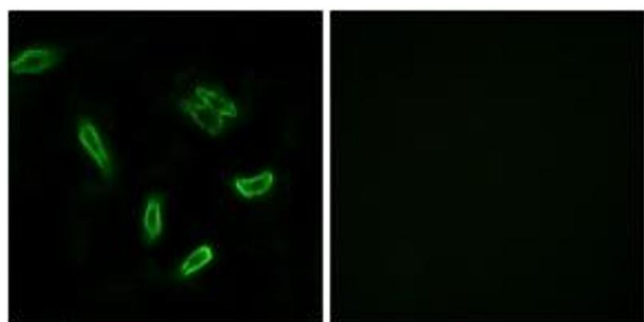
### Western Blotting

**Image 1.** Western blot analysis of extracts from HepG2 cells, using SLC27A5 Antibody. The lane on the right is treated with the synthesized peptide.



### Immunohistochemistry

**Image 2.** Immunohistochemistry analysis of paraffin-embedded human liver carcinoma tissue, using SLC27A5 Antibody. The picture on the right is treated with the synthesized peptide.



### Immunofluorescence

**Image 3.** Immunofluorescence analysis of A549 cells, using SLC27A5 Antibody. The picture on the right is treated with the synthesized peptide.