



[Go to Product page](#)

Datasheet for ABIN1534697
anti-BMP8A antibody (AA 253-302)

2 Images

Overview

Quantity:	100 µg
Target:	BMP8A
Binding Specificity:	AA 253-302
Reactivity:	Human
Host:	Rabbit
Clonality:	Polyclonal
Conjugate:	This BMP8A antibody is un-conjugated
Application:	Western Blotting (WB), ELISA, Immunofluorescence (IF)

Product Details

Immunogen:	The antiserum was produced against synthesized peptide derived from human BMP8A.
Isotype:	IgG
Specificity:	BMP8A Antibody detects endogenous levels of total BMP8A protein.
Purification:	The antibody was purified from rabbit antiserum by affinity-chromatography using immunogen.
Purity:	> 95 %

Target Details

Target:	BMP8A
Alternative Name:	BMP8A (BMP8A Products)
Background:	Synonyms: Bone morphogenetic protein 8A, BMP-8A

Target Details

NCBI Gene Symbol: BMP8A

Molecular Weight: 44 kDa

Gene ID: 353500

UniProt: [Q7Z5Y6](#)

Pathways: [Negative Regulation of Hormone Secretion](#)

Application Details

Application Notes: WB: 1:500~1:1000 IF: 1:100~1:500 ELISA: 1:20000

Comment: Unigene-Number: Hs.472497 (NCBI Gene Symbol: BMP8A)

Restrictions: For Research Use only

Handling

Format: Liquid

Concentration: 1 mg/mL

Buffer: phosphate buffered saline (without Mg²⁺ and Ca²⁺), pH 7.4, 150 mM NaCl, 0.02 % sodium azide and 50 % glycerol.

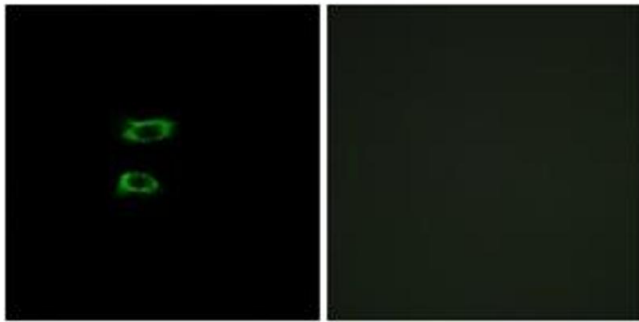
Preservative: Sodium azide

Precaution of Use: This product contains sodium azide: a POISONOUS AND HAZARDOUS SUBSTANCE which should be handled by trained staff only.

Storage: -20 °C

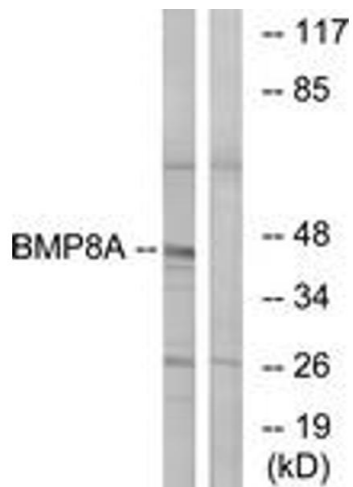
Storage Comment: Stable at -20°C for at least 1 year.

Expiry Date: 12 months



Immunofluorescence

Image 1. Immunofluorescence analysis of A549 cells, using BMP8A Antibody. The picture on the right is treated with the synthesized peptide.



Western Blotting

Image 2. Western blot analysis of extracts from COLO cells, using BMP8A Antibody. The lane on the right is treated with the synthesized peptide.