

Datasheet for ABIN1534701
anti-BRP44L antibody (AA 11-60)[Go to Product page](#)

3 Images

Overview

Quantity:	100 µg
Target:	BRP44L
Binding Specificity:	AA 11-60
Reactivity:	Human, Mouse, Rat
Host:	Rabbit
Clonality:	Polyclonal
Conjugate:	This BRP44L antibody is un-conjugated
Application:	Western Blotting (WB), Immunohistochemistry (IHC), ELISA, Immunofluorescence (IF)

Product Details

Immunogen:	The antiserum was produced against synthesized peptide derived from human BRP44L.
Isotype:	IgG
Specificity:	BRP44L Antibody detects endogenous levels of total BRP44L protein.
Purification:	The antibody was purified from rabbit antiserum by affinity-chromatography using immunogen.
Purity:	> 95 %

Target Details

Target:	BRP44L
Alternative Name:	BRP44L (BRP44L Products)
Background:	Synonyms: Brain protein 44-like protein

Target Details

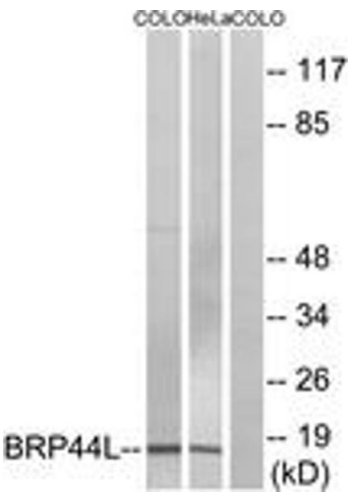
	NCBI Gene Symbol: BR44L
Molecular Weight:	12 kDa
Gene ID:	51660
UniProt:	Q9Y5U8
Pathways:	Warburg Effect

Application Details

Application Notes:	WB: 1:500~1:1000 IHC: 1:50~1:100 IF: 1:100~1:500 ELISA: 1:20000
Comment:	Unigene-Number: Hs.172755 (NCBI Gene Symbol: BR44L)
Restrictions:	For Research Use only

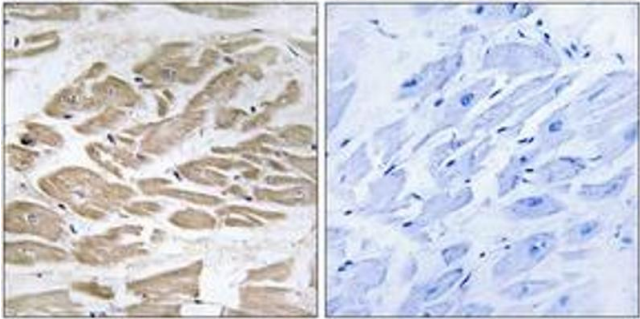
Handling

Format:	Liquid
Concentration:	1 mg/mL
Buffer:	phosphate buffered saline (without Mg ²⁺ and Ca ²⁺), pH 7.4, 150 mM NaCl, 0.02 % sodium azide and 50 % glycerol.
Preservative:	Sodium azide
Precaution of Use:	This product contains sodium azide: a POISONOUS AND HAZARDOUS SUBSTANCE which should be handled by trained staff only.
Storage:	-20 °C
Storage Comment:	Stable at -20°C for at least 1 year.
Expiry Date:	12 months



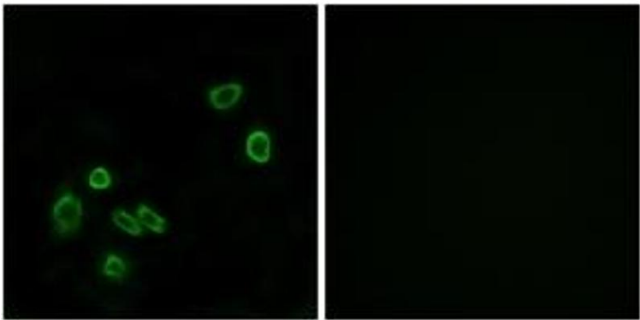
Western Blotting

Image 1. Western blot analysis of extracts from COLO/HeLa cells, using BRP44L Antibody. The lane on the right is treated with the synthesized peptide.



Immunohistochemistry

Image 2. Immunohistochemistry analysis of paraffin-embedded human heart tissue, using BRP44L Antibody. The picture on the right is treated with the synthesized peptide.



Immunofluorescence

Image 3. Immunofluorescence analysis of A549 cells, using BRP44L Antibody. The picture on the right is treated with the synthesized peptide.