

Datasheet for ABIN1534705
anti-ARFGEF2 antibody (AA 1491-1540)[Go to Product page](#)

2 Images

Overview

Quantity:	100 µg
Target:	ARFGEF2
Binding Specificity:	AA 1491-1540
Reactivity:	Human, Mouse, Rat
Host:	Rabbit
Clonality:	Polyclonal
Conjugate:	This ARFGEF2 antibody is un-conjugated
Application:	ELISA, Western Blotting (WB), Immunofluorescence (IF)

Product Details

Immunogen:	The antiserum was produced against synthesized peptide derived from human ARFGEF2.
Isotype:	IgG
Specificity:	ARFGEF2 Antibody detects endogenous levels of total ARFGEF2 protein.
Purification:	The antibody was purified from rabbit antiserum by affinity-chromatography using immunogen.
Purity:	> 95 %

Target Details

Target:	ARFGEF2
Alternative Name:	ARFGEF2 (ARFGEF2 Products)
Background:	Synonyms: BIG2, brefeldin A-inhibited GEP 2, brefeldin A-inhibited guanine nucleotide-exchange

Target Details

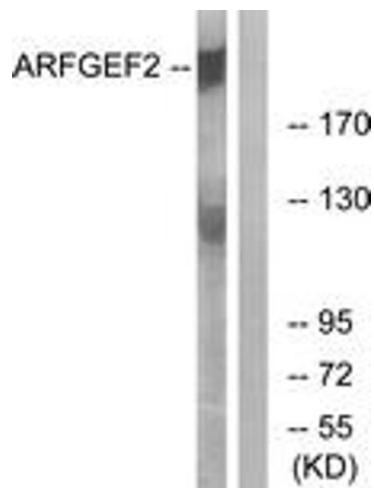
	protein 2 NCBI Gene Symbol: BIG2
Molecular Weight:	202 kDa
Gene ID:	10564
OMIM:	605371
UniProt:	Q9Y6D5

Application Details

Application Notes:	WB: 1:500~1:1000 IF: 1:100~1:500 ELISA: 1:20000
Comment:	Unigene-Number: Hs.62578 (NCBI Gene Symbol: BIG2)
Restrictions:	For Research Use only

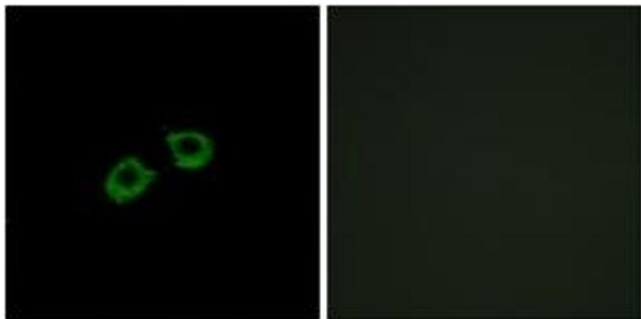
Handling

Format:	Liquid
Concentration:	1 mg/mL
Buffer:	phosphate buffered saline (without Mg ²⁺ and Ca ²⁺), pH 7.4, 150 mM NaCl, 0.02 % sodium azide and 50 % glycerol.
Preservative:	Sodium azide
Precaution of Use:	This product contains sodium azide: a POISONOUS AND HAZARDOUS SUBSTANCE which should be handled by trained staff only.
Storage:	-20 °C
Storage Comment:	Stable at -20°C for at least 1 year.
Expiry Date:	12 months



Western Blotting

Image 1. Western blot analysis of extracts from A549 cells, using ARFGEF2 Antibody. The lane on the right is treated with the synthesized peptide.



Immunofluorescence

Image 2. Immunofluorescence analysis of A549 cells, using ARFGEF2 Antibody. The picture on the right is treated with the synthesized peptide.