

Datasheet for ABIN1534706
anti-BRWD3 antibody (AA 1751-1800)[Go to Product page](#)

2 Images

Overview

Quantity:	100 µg
Target:	BRWD3
Binding Specificity:	AA 1751-1800
Reactivity:	Human, Mouse
Host:	Rabbit
Clonality:	Polyclonal
Conjugate:	This BRWD3 antibody is un-conjugated
Application:	Western Blotting (WB), ELISA, Immunohistochemistry (IHC)

Product Details

Immunogen:	The antiserum was produced against synthesized peptide derived from human BRWD3.
Isotype:	IgG
Specificity:	BRWD3 Antibody detects endogenous levels of total BRWD3 protein.
Purification:	The antibody was purified from rabbit antiserum by affinity-chromatography using immunogen.
Purity:	> 95 %

Target Details

Target:	BRWD3
Alternative Name:	BRWD3 (BRWD3 Products)
Background:	Synonyms: BRODL, bromodomain and WD repeat domain containing 3, FLJ38568

Target Details

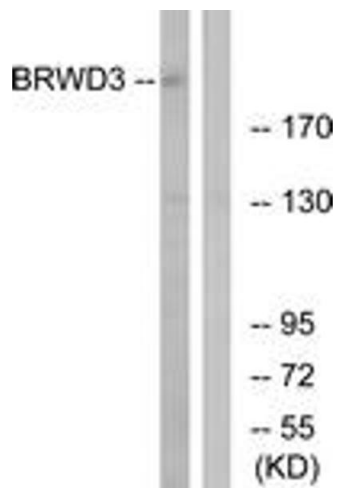
	NCBI Gene Symbol: BRWD3
Molecular Weight:	203 kDa
Gene ID:	254065
OMIM:	300553
UniProt:	Q6RI45

Application Details

Application Notes:	WB: 1:500~1:1000 IHC: 1:50~1:100 ELISA: 1:40000
Comment:	Unigene-Number: Hs.170667, Hs.613180, Hs.709836 (NCBI Gene Symbol: BRWD3)
Restrictions:	For Research Use only

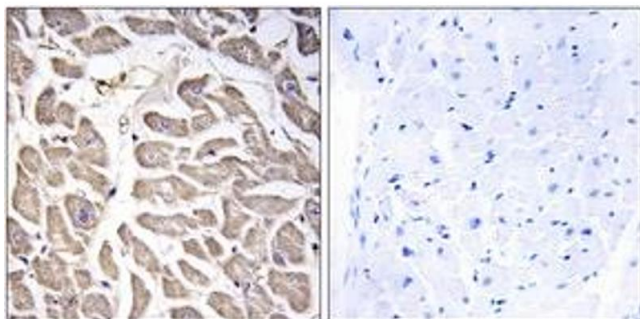
Handling

Format:	Liquid
Concentration:	1 mg/mL
Buffer:	phosphate buffered saline (without Mg ²⁺ and Ca ²⁺), pH 7.4, 150 mM NaCl, 0.02 % sodium azide and 50 % glycerol.
Preservative:	Sodium azide
Precaution of Use:	This product contains sodium azide: a POISONOUS AND HAZARDOUS SUBSTANCE which should be handled by trained staff only.
Storage:	-20 °C
Storage Comment:	Stable at -20°C for at least 1 year.
Expiry Date:	12 months



Western Blotting

Image 1. Western blot analysis of extracts from COLO cells, using BRWD3 Antibody. The lane on the right is treated with the synthesized peptide.



Immunohistochemistry

Image 2. Immunohistochemistry analysis of paraffin-embedded human heart tissue, using BRWD3 Antibody. The picture on the right is treated with the synthesized peptide.