

Datasheet for ABIN1534709
anti-CMC1 antibody (AA 391-440)[Go to Product page](#)

1 Image

Overview

Quantity:	100 µg
Target:	CMC1
Binding Specificity:	AA 391-440
Reactivity:	Human
Host:	Rabbit
Clonality:	Polyclonal
Conjugate:	This CMC1 antibody is un-conjugated
Application:	ELISA, Immunohistochemistry (IHC)

Product Details

Immunogen:	The antiserum was produced against synthesized peptide derived from human CMC1.
Isotype:	IgG
Specificity:	CMC1 Antibody detects endogenous levels of total CMC1 protein.
Purification:	The antibody was purified from rabbit antiserum by affinity-chromatography using immunogen.
Purity:	> 95 %

Target Details

Target:	CMC1
Alternative Name:	CMC1 (CMC1 Products)
Background:	Synonyms: Calcium-binding mitochondrial carrier protein Aralar1, Mitochondrial aspartate

Target Details

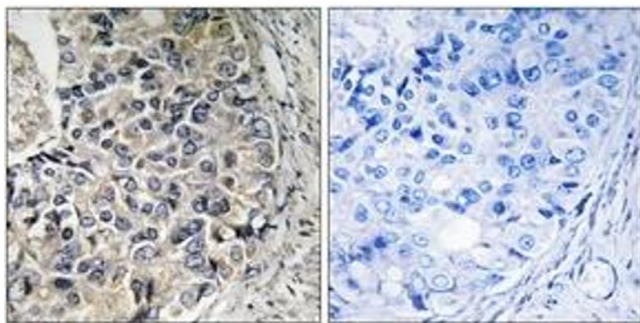
	glutamate carrier 1, Solute carrier family 25 member 12 NCBI Gene Symbol: CMC1
Molecular Weight:	74 kDa
Gene ID:	8604
OMIM:	603667
UniProt:	O75746

Application Details

Application Notes:	IHC: 1:50~1:100 ELISA: 1:5000
Comment:	Unigene-Number: Hs.470608 (NCBI Gene Symbol: CMC1)
Restrictions:	For Research Use only

Handling

Format:	Liquid
Concentration:	1 mg/mL
Buffer:	phosphate buffered saline (without Mg ²⁺ and Ca ²⁺), pH 7.4, 150 mM NaCl, 0.02 % sodium azide and 50 % glycerol.
Preservative:	Sodium azide
Precaution of Use:	This product contains sodium azide: a POISONOUS AND HAZARDOUS SUBSTANCE which should be handled by trained staff only.
Storage:	-20 °C
Storage Comment:	Stable at -20°C for at least 1 year.
Expiry Date:	12 months



Immunohistochemistry

Image 1. Immunohistochemistry analysis of paraffin-embedded human prostate carcinoma tissue, using CMC1 Antibody. The picture on the right is treated with the synthesized peptide.