

Datasheet for ABIN1534712
anti-CNN2 antibody (AA 121-170)[Go to Product page](#)

2 Images

Overview

Quantity:	100 µg
Target:	CNN2
Binding Specificity:	AA 121-170
Reactivity:	Human, Mouse
Host:	Rabbit
Clonality:	Polyclonal
Conjugate:	This CNN2 antibody is un-conjugated
Application:	Western Blotting (WB), ELISA, Immunofluorescence (IF)

Product Details

Immunogen:	The antiserum was produced against synthesized peptide derived from human CNN2.
Isotype:	IgG
Specificity:	CNN2 Antibody detects endogenous levels of total CNN2 protein.
Purification:	The antibody was purified from rabbit antiserum by affinity-chromatography using immunogen.
Purity:	> 95 %

Target Details

Target:	CNN2
Alternative Name:	CNN2 (CNN2 Products)
Background:	Synonyms: Calponin H2 smooth muscle, CLP2, CNN2, Neutral calponin

Target Details

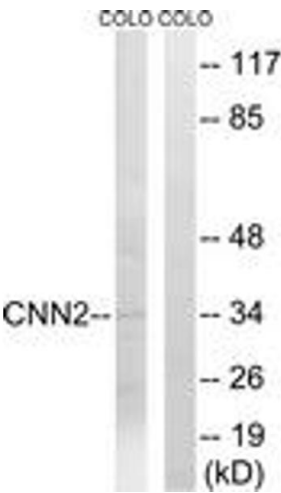
	NCBI Gene Symbol: CNN2
Molecular Weight:	33 kDa
Gene ID:	1265
OMIM:	602373
UniProt:	Q99439

Application Details

Application Notes:	WB: 1:500~1:1000 IF: 1:100~1:500 ELISA: 1:40000
Comment:	Unigene-Number: Hs.651512 (NCBI Gene Symbol: CNN2)
Restrictions:	For Research Use only

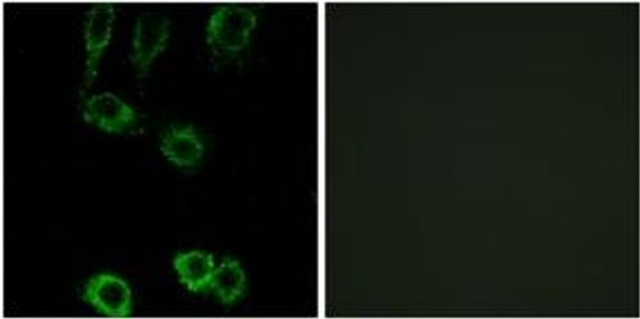
Handling

Format:	Liquid
Concentration:	1 mg/mL
Buffer:	phosphate buffered saline (without Mg ²⁺ and Ca ²⁺), pH 7.4, 150 mM NaCl, 0.02 % sodium azide and 50 % glycerol.
Preservative:	Sodium azide
Precaution of Use:	This product contains sodium azide: a POISONOUS AND HAZARDOUS SUBSTANCE which should be handled by trained staff only.
Storage:	-20 °C
Storage Comment:	Stable at -20°C for at least 1 year.
Expiry Date:	12 months



Western Blotting

Image 1. Western blot analysis of extracts from COLO cells, using CNN2 Antibody. The lane on the right is treated with the synthesized peptide.



Immunofluorescence

Image 2. Immunofluorescence analysis of A549 cells, using CNN2 Antibody. The picture on the right is treated with the synthesized peptide.