

Datasheet for ABIN1534716
anti-CLIP3 antibody (AA 361-410)

2 Images

[Go to Product page](#)

Overview

Quantity:	100 µg
Target:	CLIP3
Binding Specificity:	AA 361-410
Reactivity:	Human, Mouse, Rat
Host:	Rabbit
Clonality:	Polyclonal
Conjugate:	This CLIP3 antibody is un-conjugated
Application:	Western Blotting (WB), ELISA, Immunofluorescence (IF)

Product Details

Immunogen:	The antiserum was produced against synthesized peptide derived from human CLIP3.
Isotype:	IgG
Specificity:	CLIP3 Antibody detects endogenous levels of total CLIP3 protein.
Purification:	The antibody was purified from rabbit antiserum by affinity-chromatography using immunogen.
Purity:	> 95 %

Target Details

Target:	CLIP3
Alternative Name:	CLIP3 (CLIP3 Products)
Background:	Synonyms: CAP-Gly domain-containing linker protein 3, Cytoplasmic linker protein 170-related

Target Details

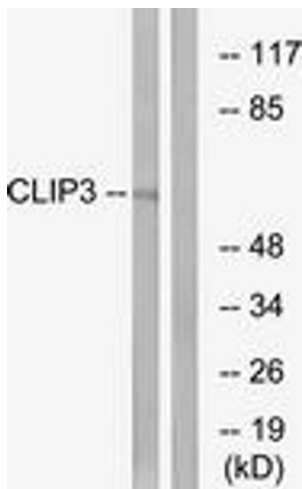
	59 kDa protein, CLIPR-59, CLIP-170-related 59 kDa protein NCBI Gene Symbol: CLIP3
Molecular Weight:	59 kDa
Gene ID:	25999
OMIM:	607382
UniProt:	Q96DZ5

Application Details

Application Notes:	WB: 1:500~1:1000 IF: 1:100~1:500 ELISA: 1:40000
Comment:	Unigene-Number: Hs.466539 (NCBI Gene Symbol: CLIP3)
Restrictions:	For Research Use only

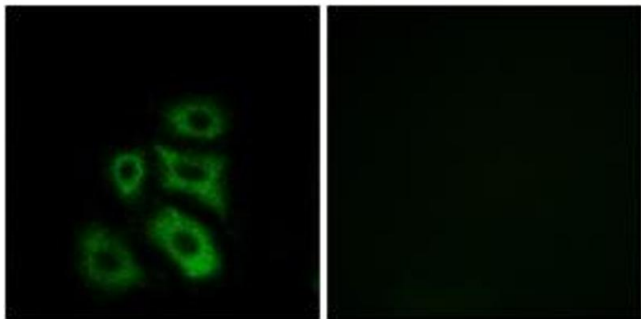
Handling

Format:	Liquid
Concentration:	1 mg/mL
Buffer:	phosphate buffered saline (without Mg ²⁺ and Ca ²⁺), pH 7.4, 150 mM NaCl, 0.02 % sodium azide and 50 % glycerol.
Preservative:	Sodium azide
Precaution of Use:	This product contains sodium azide: a POISONOUS AND HAZARDOUS SUBSTANCE which should be handled by trained staff only.
Storage:	-20 °C
Storage Comment:	Stable at -20°C for at least 1 year.
Expiry Date:	12 months



Western Blotting

Image 1. Western blot analysis of extracts from A549 cells, using CLIP3 Antibody. The lane on the right is treated with the synthesized peptide.



Immunofluorescence

Image 2. Immunofluorescence analysis of A549 cells, using CLIP3 Antibody. The picture on the right is treated with the synthesized peptide.