

Datasheet for ABIN1534723
anti-CA1 antibody (AA 41-90)



[Go to Product page](#)

2 Images

Overview

Quantity:	100 µL
Target:	CA1
Binding Specificity:	AA 41-90
Reactivity:	Human
Host:	Rabbit
Clonality:	Polyclonal
Conjugate:	This CA1 antibody is un-conjugated
Application:	Western Blotting (WB), ELISA, Immunohistochemistry (IHC)

Product Details

Immunogen:	The antiserum was produced against synthesized peptide derived from human CA1.
Isotype:	IgG
Specificity:	CA1 Antibody detects endogenous levels of total CA1 protein.
Purification:	The antibody was purified from rabbit antiserum by affinity-chromatography using immunogen.
Purity:	> 95 %

Target Details

Target:	CA1
Alternative Name:	CA1 (CA1 Products)
Background:	Synonyms: Carbonic anhydrase 1, Carbonic anhydrase I, Carbonate dehydratase I, CA-I,

Target Details

Carbonic anhydrase B, CAB
NCBI Gene Symbol: CAH1

Molecular Weight: 28 kDa

Gene ID: 759

OMIM: 114800

UniProt: [P00915](#)

Application Details

Application Notes: WB: 1:500~1:1000 IHC: 1:50~1:100 ELISA: 1:40000

Comment: Unigene-Number: Hs.23118 (NCBI Gene Symbol: CAH1)

Restrictions: For Research Use only

Handling

Format: Liquid

Concentration: 1 mg/mL

Buffer: phosphate buffered saline (without Mg²⁺ and Ca²⁺), pH 7.4, 150 mM NaCl, 0.02 % sodium azide and 50 % glycerol.

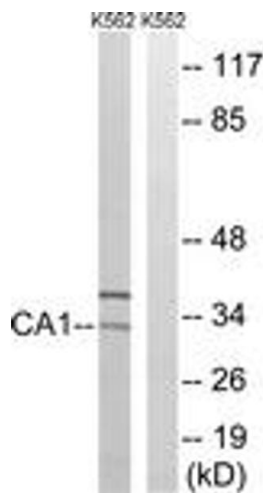
Preservative: Sodium azide

Precaution of Use: This product contains sodium azide: a POISONOUS AND HAZARDOUS SUBSTANCE which should be handled by trained staff only.

Storage: -20 °C

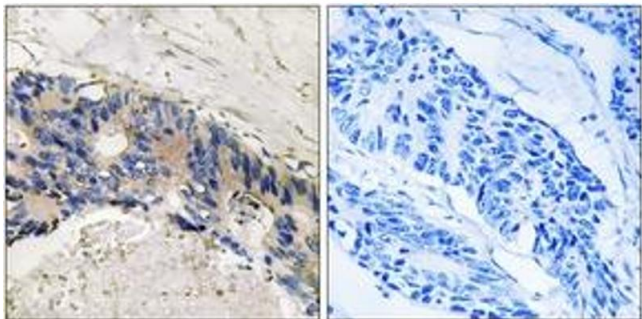
Storage Comment: Stable at -20°C for at least 1 year.

Expiry Date: 12 months



Western Blotting

Image 1. Western blot analysis of extracts from K562 cells, using CA1 Antibody. The lane on the right is treated with the synthesized peptide.



Immunohistochemistry

Image 2. Immunohistochemistry analysis of paraffin-embedded human colon carcinoma tissue, using CA1 Antibody. The picture on the right is treated with the synthesized peptide.