



[Go to Product page](#)

Datasheet for ABIN1534726
anti-CA14 antibody (AA 161-210)

1 Image

Overview

Quantity:	100 µg
Target:	CA14
Binding Specificity:	AA 161-210
Reactivity:	Human, Mouse, Rat
Host:	Rabbit
Clonality:	Polyclonal
Conjugate:	This CA14 antibody is un-conjugated
Application:	Western Blotting (WB), ELISA

Product Details

Immunogen:	The antiserum was produced against synthesized peptide derived from human CA14.
Isotype:	IgG
Specificity:	CA14 Antibody detects endogenous levels of total CA14 protein.
Purification:	The antibody was purified from rabbit antiserum by affinity-chromatography using immunogen.
Purity:	> 95 %

Target Details

Target:	CA14
Alternative Name:	CA14 (CA14 Products)
Background:	Synonyms: Carbonic anhydrase 14, Carbonic anhydrase XIV, Carbonate dehydratase XIV, CA-

Target Details

XIV
NCBI Gene Symbol: CAH14

Molecular Weight: 37 kDa

Gene ID: 23632

OMIM: 604832

UniProt: [Q9ULX7](#)

Application Details

Application Notes: WB: 1:500~1:1000 ELISA: 1:5000

Comment: Unigene-Number: Hs.528988 (NCBI Gene Symbol: CAH14)

Restrictions: For Research Use only

Handling

Format: Liquid

Concentration: 1 mg/mL

Buffer: phosphate buffered saline (without Mg²⁺ and Ca²⁺), pH 7.4, 150 mM NaCl, 0.02 % sodium azide and 50 % glycerol.

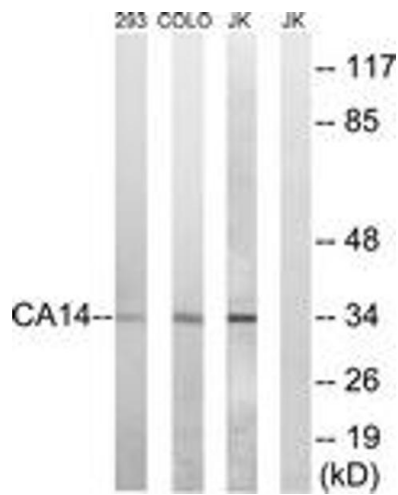
Preservative: Sodium azide

Precaution of Use: This product contains sodium azide: a POISONOUS AND HAZARDOUS SUBSTANCE which should be handled by trained staff only.

Storage: -20 °C

Storage Comment: Stable at -20°C for at least 1 year.

Expiry Date: 12 months



Western Blotting

Image 1. Western blot analysis of extracts from Jurkat/COLO/293 cells, using CA14 Antibody. The lane on the right is treated with the synthesized peptide.