

Datasheet for ABIN1534732
anti-CBR3 antibody (AA 151-200)

2 Images

[Go to Product page](#)

Overview

Quantity:	100 µg
Target:	CBR3
Binding Specificity:	AA 151-200
Reactivity:	Human, Mouse, Rat
Host:	Rabbit
Clonality:	Polyclonal
Conjugate:	This CBR3 antibody is un-conjugated
Application:	Western Blotting (WB), Immunohistochemistry (IHC), ELISA

Product Details

Immunogen:	The antiserum was produced against synthesized peptide derived from human CBR3.
Isotype:	IgG
Specificity:	CBR3 Antibody detects endogenous levels of total CBR3 protein.
Purification:	The antibody was purified from rabbit antiserum by affinity-chromatography using immunogen.
Purity:	> 95 %

Target Details

Target:	CBR3
Alternative Name:	CBR3 (CBR3 Products)
Background:	Synonyms: carbonyl reductase 3, NADPH-dependent carbonyl reductase 3

Target Details

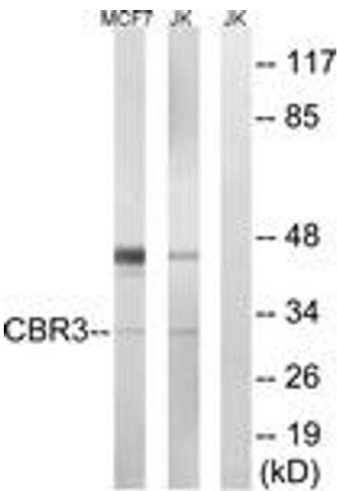
	NCBI Gene Symbol: CBR3
Molecular Weight:	30 kDa
Gene ID:	874
OMIM:	603608
UniProt:	O75828

Application Details

Application Notes:	WB: 1:500~1:1000 IHC: 1:50~1:100 ELISA: 1:40000
Comment:	Unigene-Number: Hs.154510 (NCBI Gene Symbol: CBR3)
Restrictions:	For Research Use only

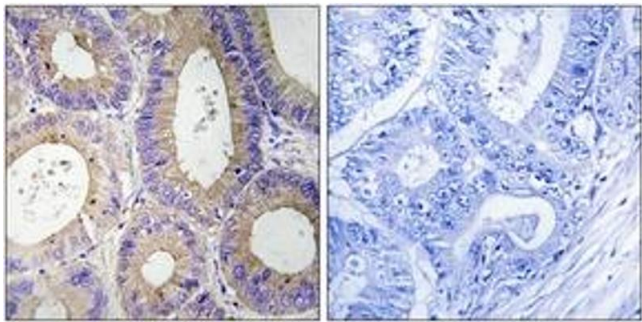
Handling

Format:	Liquid
Concentration:	1 mg/mL
Buffer:	phosphate buffered saline (without Mg ²⁺ and Ca ²⁺), pH 7.4, 150 mM NaCl, 0.02 % sodium azide and 50 % glycerol.
Preservative:	Sodium azide
Precaution of Use:	This product contains sodium azide: a POISONOUS AND HAZARDOUS SUBSTANCE which should be handled by trained staff only.
Storage:	-20 °C
Storage Comment:	Stable at -20°C for at least 1 year.
Expiry Date:	12 months



Western Blotting

Image 1. Western blot analysis of extracts from Jurkat/MCF7 cells, using CBR3 Antibody. The lane on the right is treated with the synthesized peptide.



Immunohistochemistry

Image 2. Immunohistochemistry analysis of paraffin-embedded human colon carcinoma tissue, using CBR3 Antibody. The picture on the right is treated with the synthesized peptide.