

Datasheet for ABIN1534757
anti-CEP78 antibody (AA 301-350)[Go to Product page](#)

2 Images

Overview

Quantity:	100 µg
Target:	CEP78
Binding Specificity:	AA 301-350
Reactivity:	Human, Mouse
Host:	Rabbit
Clonality:	Polyclonal
Conjugate:	This CEP78 antibody is un-conjugated
Application:	Western Blotting (WB), Immunohistochemistry (IHC), ELISA

Product Details

Immunogen:	The antiserum was produced against synthesized peptide derived from human CEP78.
Isotype:	IgG
Specificity:	CEP78 Antibody detects endogenous levels of total CEP78 protein.
Purification:	The antibody was purified from rabbit antiserum by affinity-chromatography using immunogen.
Purity:	> 95 %

Target Details

Target:	CEP78
Alternative Name:	CEP78 (CEP78 Products)
Background:	Synonyms: Centrosomal protein of 78 kDa, Cep78

Target Details

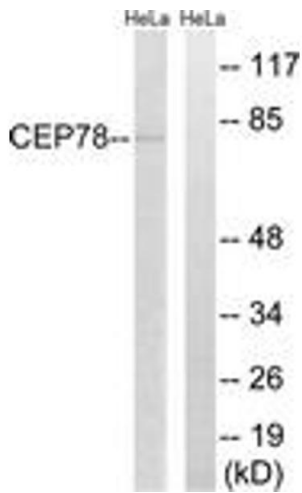
	NCBI Gene Symbol: CEP78
Molecular Weight:	76 kDa
Gene ID:	84131
UniProt:	Q5JTW2

Application Details

Application Notes:	WB: 1:500~1:1000 IHC: 1:50~1:100 ELISA: 1:20000
Comment:	Unigene-Number: Hs.374421 (NCBI Gene Symbol: CEP78)
Restrictions:	For Research Use only

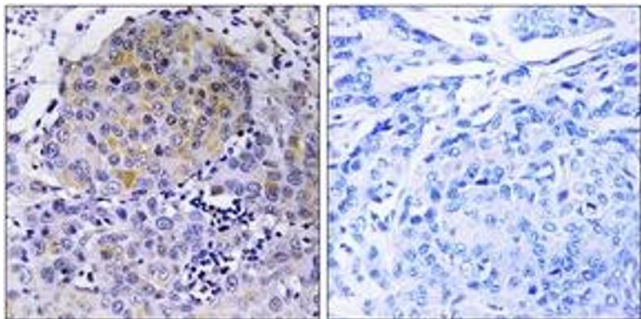
Handling

Format:	Liquid
Concentration:	1 mg/mL
Buffer:	phosphate buffered saline (without Mg2+ and Ca2+), pH 7.4, 150 mM NaCl, 0.02 % sodium azide and 50 % glycerol.
Preservative:	Sodium azide
Precaution of Use:	This product contains sodium azide: a POISONOUS AND HAZARDOUS SUBSTANCE which should be handled by trained staff only.
Storage:	-20 °C
Storage Comment:	Stable at -20°C for at least 1 year.
Expiry Date:	12 months



Western Blotting

Image 1. Western blot analysis of extracts from HeLa cells, using CEP78 Antibody. The lane on the right is treated with the synthesized peptide.



Immunohistochemistry

Image 2. Immunohistochemistry analysis of paraffin-embedded human breast carcinoma tissue, using CEP78 Antibody. The picture on the right is treated with the synthesized peptide.