



[Go to Product page](#)

Datasheet for ABIN1534758  
**anti-CEP350 antibody (AA 671-720)**

1 Image

### Overview

Quantity:	100 µL
Target:	CEP350
Binding Specificity:	AA 671-720
Reactivity:	Human
Host:	Rabbit
Clonality:	Polyclonal
Conjugate:	This CEP350 antibody is un-conjugated
Application:	ELISA, Immunohistochemistry (IHC)

### Product Details

Immunogen:	The antiserum was produced against synthesized peptide derived from human CEP35.
Isotype:	IgG
Specificity:	CEP350 Antibody detects endogenous levels of total CEP350 protein.
Purification:	The antibody was purified from rabbit antiserum by affinity-chromatography using immunogen.
Purity:	> 95 %

### Target Details

Target:	CEP350
Alternative Name:	CEP350 ( <a href="#">CEP350 Products</a> )
Background:	Synonyms: CAP350, CE350, centrosomal protein 350 kDa, FLJ38282, FLJ44058, gm133,

## Target Details

---

KIAA0480  
NCBI Gene Symbol: CEP35

Molecular Weight: 350 kDa

Gene ID: 9857

UniProt: [Q5VT06](#)

Pathways: [SARS-CoV-2 Protein Interactome](#)

## Application Details

---

Application Notes: IHC: 1:50~1:100 ELISA: 1:40000

Comment: Unigene-Number: Hs.413045 (NCBI Gene Symbol: CEP35)

Restrictions: For Research Use only

## Handling

---

Format: Liquid

Concentration: 1 mg/mL

Buffer: phosphate buffered saline (without Mg<sup>2+</sup> and Ca<sup>2+</sup>), pH 7.4, 150 mM NaCl, 0.02 % sodium azide and 50 % glycerol.

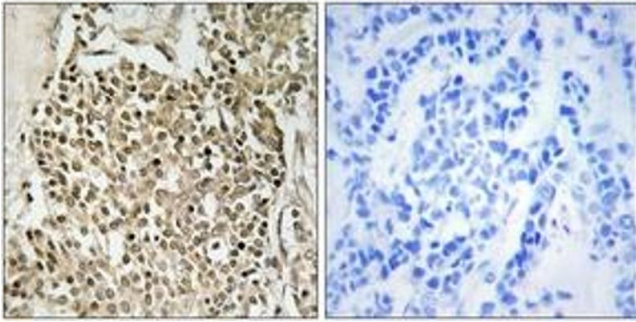
Preservative: Sodium azide

Precaution of Use: This product contains sodium azide: a POISONOUS AND HAZARDOUS SUBSTANCE which should be handled by trained staff only.

Storage: -20 °C

Storage Comment: Stable at -20°C for at least 1 year.

Expiry Date: 12 months



### Immunohistochemistry

**Image 1.** Immunohistochemistry analysis of paraffin-embedded human breast carcinoma, using CEP350 Antibody. The picture on the right is treated with the synthesized peptide.