



[Go to Product page](#)

Datasheet for ABIN1534759
anti-CBLN1 antibody (AA 131-180)

1 Image

Overview

Quantity:	100 µL
Target:	CBLN1
Binding Specificity:	AA 131-180
Reactivity:	Human, Rat, Mouse
Host:	Rabbit
Clonality:	Polyclonal
Conjugate:	This CBLN1 antibody is un-conjugated
Application:	Western Blotting (WB), ELISA

Product Details

Immunogen:	The antiserum was produced against synthesized peptide derived from human CBLN1.
Isotype:	IgG
Specificity:	CBLN1 Antibody detects endogenous levels of total CBLN1 protein.
Purification:	The antibody was purified from rabbit antiserum by affinity-chromatography using immunogen.
Purity:	> 95 %

Target Details

Target:	CBLN1
Alternative Name:	CBLN1 (CBLN1 Products)
Background:	Synonyms: Cerebellin-1, Precerebellin

Target Details

NCBI Gene Symbol: CBLN1

Molecular Weight: 21 kDa

Gene ID: 869

OMIM: 600432

UniProt: [P23435](#)

Application Details

Application Notes: WB: 1:500~1:1000 ELISA: 1:10000

Comment: Unigene-Number: Hs.458423 (NCBI Gene Symbol: CBLN1)

Restrictions: For Research Use only

Handling

Format: Liquid

Concentration: 1 mg/mL

Buffer: phosphate buffered saline (without Mg²⁺ and Ca²⁺), pH 7.4, 150 mM NaCl, 0.02 % sodium azide and 50 % glycerol.

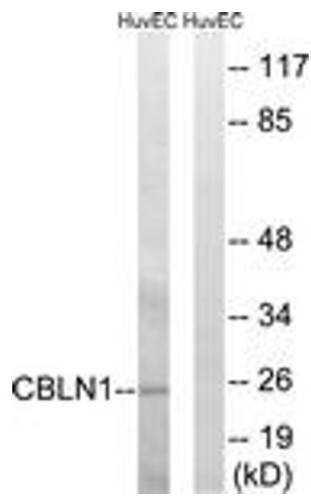
Preservative: Sodium azide

Precaution of Use: This product contains sodium azide: a POISONOUS AND HAZARDOUS SUBSTANCE which should be handled by trained staff only.

Storage: -20 °C

Storage Comment: Stable at -20°C for at least 1 year.

Expiry Date: 12 months



Western Blotting

Image 1. Western blot analysis of extracts from HuvEc cells, using CBLN1 Antibody. The lane on the right is treated with the synthesized peptide.