

Datasheet for ABIN1534762
anti-CBLN4 antibody (AA 141-190)[Go to Product page](#)

2 Images

Overview

Quantity:	100 µg
Target:	CBLN4
Binding Specificity:	AA 141-190
Reactivity:	Human, Mouse
Host:	Rabbit
Clonality:	Polyclonal
Conjugate:	This CBLN4 antibody is un-conjugated
Application:	Western Blotting (WB), Immunohistochemistry (IHC), ELISA

Product Details

Immunogen:	The antiserum was produced against synthesized peptide derived from human CBLN4.
Isotype:	IgG
Specificity:	CBLN4 Antibody detects endogenous levels of total CBLN4 protein.
Purification:	The antibody was purified from rabbit antiserum by affinity-chromatography using immunogen.
Purity:	> 95 %

Target Details

Target:	CBLN4
Alternative Name:	CBLN4 (CBLN4 Products)
Background:	Synonyms: Cerebellin-4, Cerebellin-like glycoprotein 1

Target Details

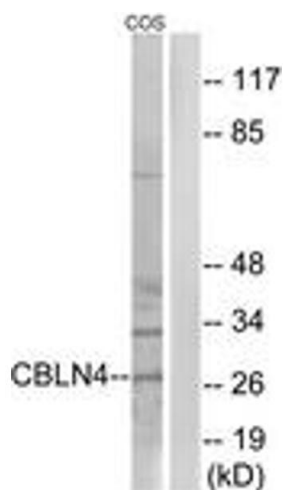
	NCBI Gene Symbol: CBLN4
Molecular Weight:	21 kDa
Gene ID:	140689
UniProt:	Q9NTU7

Application Details

Application Notes:	WB: 1:500~1:1000 IHC: 1:50~1:100 ELISA: 1:5000
Comment:	Unigene-Number: Hs.126141 (NCBI Gene Symbol: CBLN4)
Restrictions:	For Research Use only

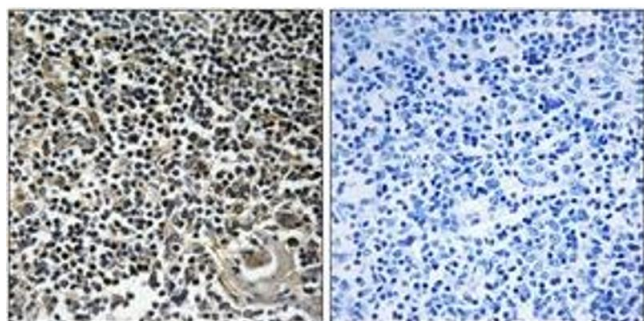
Handling

Format:	Liquid
Concentration:	1 mg/mL
Buffer:	phosphate buffered saline (without Mg2+ and Ca2+), pH 7.4, 150 mM NaCl, 0.02 % sodium azide and 50 % glycerol.
Preservative:	Sodium azide
Precaution of Use:	This product contains sodium azide: a POISONOUS AND HAZARDOUS SUBSTANCE which should be handled by trained staff only.
Storage:	-20 °C
Storage Comment:	Stable at -20°C for at least 1 year.
Expiry Date:	12 months



Western Blotting

Image 1. Western blot analysis of extracts from COS cells, using CBLN4 Antibody. The lane on the right is treated with the synthesized peptide.



Immunohistochemistry

Image 2. Immunohistochemistry analysis of paraffin-embedded human thymus gland tissue, using CBLN4 Antibody. The picture on the right is treated with the synthesized peptide.