



Datasheet for ABIN1534764  
**anti-CLN6 antibody (AA 221-270)**



[Go to Product page](#)

2 Images

Overview

Quantity:	100 µL
Target:	CLN6
Binding Specificity:	AA 221-270
Reactivity:	Human
Host:	Rabbit
Clonality:	Polyclonal
Conjugate:	This CLN6 antibody is un-conjugated
Application:	Western Blotting (WB), ELISA, Immunohistochemistry (IHC)

Product Details

Immunogen:	The antiserum was produced against synthesized peptide derived from human CLN6.
Isotype:	IgG
Specificity:	CLN6 Antibody detects endogenous levels of total CLN6 protein.
Purification:	The antibody was purified from rabbit antiserum by affinity-chromatography using immunogen.
Purity:	> 95 %

Target Details

Target:	CLN6
Alternative Name:	CLN6 ( <a href="#">CLN6 Products</a> )
Background:	Synonyms: Ceroid-lipofuscinosis neuronal protein 6, Protein CLN6

## Target Details

---

NCBI Gene Symbol: CLN6

Molecular Weight: 35 kDa

Gene ID: 54982

OMIM: 606725

UniProt: [Q9NWW5](#)

Pathways: [Glycosaminoglycan Metabolic Process](#)

## Application Details

---

Application Notes: WB: 1:500~1:1000 IHC: 1:50~1:100 ELISA: 1:40000

Comment: Unigene-Number: Hs.584921 (NCBI Gene Symbol: CLN6)

Restrictions: For Research Use only

## Handling

---

Format: Liquid

Concentration: 1 mg/mL

Buffer: phosphate buffered saline (without Mg<sup>2+</sup> and Ca<sup>2+</sup>), pH 7.4, 150 mM NaCl, 0.02 % sodium azide and 50 % glycerol.

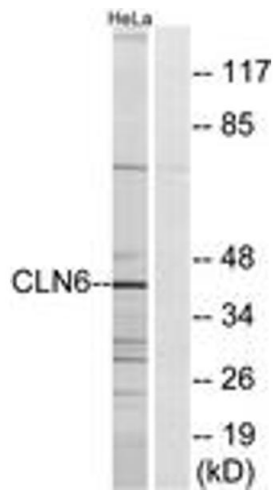
Preservative: Sodium azide

Precaution of Use: This product contains sodium azide: a POISONOUS AND HAZARDOUS SUBSTANCE which should be handled by trained staff only.

Storage: -20 °C

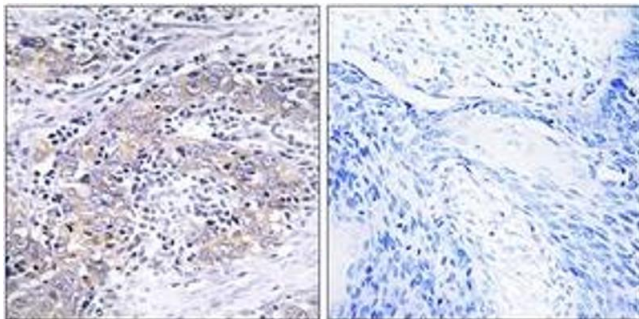
Storage Comment: Stable at -20°C for at least 1 year.

Expiry Date: 12 months



### Western Blotting

**Image 1.** Western blot analysis of extracts from HeLa cells, using CLN6 Antibody. The lane on the right is treated with the synthesized peptide.



### Immunohistochemistry

**Image 2.** Immunohistochemistry analysis of paraffin-embedded human cervix carcinoma tissue, using CLN6 Antibody. The picture on the right is treated with the synthesized peptide.