

Datasheet for ABIN1534765
anti-CLCC1 antibody (AA 391-440)[Go to Product page](#)

2 Images

Overview

Quantity:	100 µg
Target:	CLCC1
Binding Specificity:	AA 391-440
Reactivity:	Human
Host:	Rabbit
Clonality:	Polyclonal
Conjugate:	This CLCC1 antibody is un-conjugated
Application:	Western Blotting (WB), ELISA, Immunofluorescence (IF)

Product Details

Immunogen:	The antiserum was produced against synthesized peptide derived from human CLCC1.
Isotype:	IgG
Specificity:	CLCC1 Antibody detects endogenous levels of total CLCC1 protein.
Purification:	The antibody was purified from rabbit antiserum by affinity-chromatography using immunogen.
Purity:	> 95 %

Target Details

Target:	CLCC1
Alternative Name:	CLCC1 (CLCC1 Products)
Background:	Synonyms: KIAA0761, MCLC, mid-1-related chloride channel 1

Target Details

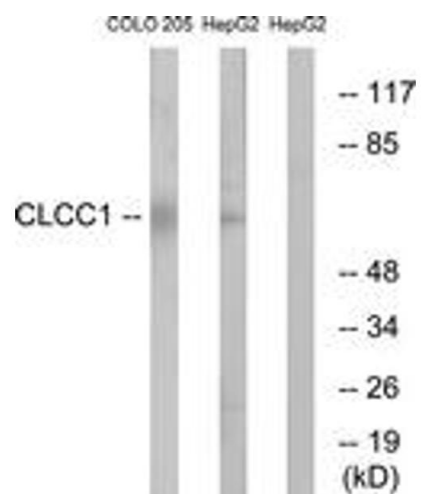
	NCBI Gene Symbol: CLCC1
Molecular Weight:	62 kDa
Gene ID:	23155
UniProt:	Q96S66
Pathways:	SARS-CoV-2 Protein Interactome , The Global Phosphorylation Landscape of SARS-CoV-2 Infection

Application Details

Application Notes:	WB: 1:500~1:1000 IF: 1:100~1:500 ELISA: 1:40000
Comment:	Unigene-Number: Hs.658489 (NCBI Gene Symbol: CLCC1)
Restrictions:	For Research Use only

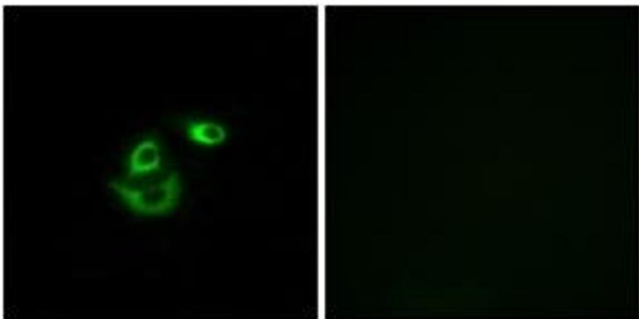
Handling

Format:	Liquid
Concentration:	1 mg/mL
Buffer:	phosphate buffered saline (without Mg ²⁺ and Ca ²⁺), pH 7.4, 150 mM NaCl, 0.02 % sodium azide and 50 % glycerol.
Preservative:	Sodium azide
Precaution of Use:	This product contains sodium azide: a POISONOUS AND HAZARDOUS SUBSTANCE which should be handled by trained staff only.
Storage:	-20 °C
Storage Comment:	Stable at -20°C for at least 1 year.
Expiry Date:	12 months



Western Blotting

Image 1. Western blot analysis of extracts from COLO/HepG2 cells, using CLCC1 Antibody. The lane on the right is treated with the synthesized peptide.



Immunofluorescence

Image 2. Immunofluorescence analysis of A549 cells, using CLCC1 Antibody. The picture on the right is treated with the synthesized peptide.