



[Go to Product page](#)

Datasheet for ABIN1534766  
**anti-CLCN4 antibody (AA 221-270)**

2 Images

Overview

Quantity:	100 µL
Target:	CLCN4
Binding Specificity:	AA 221-270
Reactivity:	Human, Rat, Mouse
Host:	Rabbit
Clonality:	Polyclonal
Conjugate:	This CLCN4 antibody is un-conjugated
Application:	Western Blotting (WB), Immunofluorescence (IF), ELISA

Product Details

Immunogen:	The antiserum was produced against synthesized peptide derived from human CLCN4.
Isotype:	IgG
Specificity:	CLCN4 Antibody detects endogenous levels of total CLCN4 protein.
Purification:	The antibody was purified from rabbit antiserum by affinity-chromatography using immunogen.
Purity:	> 95 %

Target Details

Target:	CLCN4
Alternative Name:	CLCN4 ( <a href="#">CLCN4 Products</a> )
Background:	Synonyms: Chloride channel protein 4, CIC-4

## Target Details

---

NCBI Gene Symbol: CLCN4

Molecular Weight: 84 kDa

Gene ID: 1183

OMIM: 302910

UniProt: [P51793](#)

## Application Details

---

Application Notes: WB: 1:500~1:1000 IF: 1:100~1:500 ELISA: 1:60000

Comment: Unigene-Number: Hs.495674 (NCBI Gene Symbol: CLCN4)

Restrictions: For Research Use only

## Handling

---

Format: Liquid

Concentration: 1 mg/mL

Buffer: phosphate buffered saline (without Mg<sup>2+</sup> and Ca<sup>2+</sup>), pH 7.4, 150 mM NaCl, 0.02 % sodium azide and 50 % glycerol.

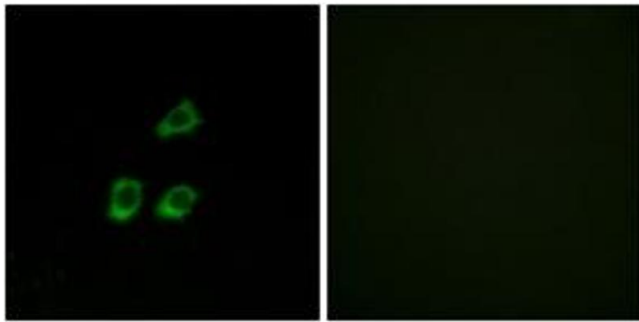
Preservative: Sodium azide

Precaution of Use: This product contains sodium azide: a POISONOUS AND HAZARDOUS SUBSTANCE which should be handled by trained staff only.

Storage: -20 °C

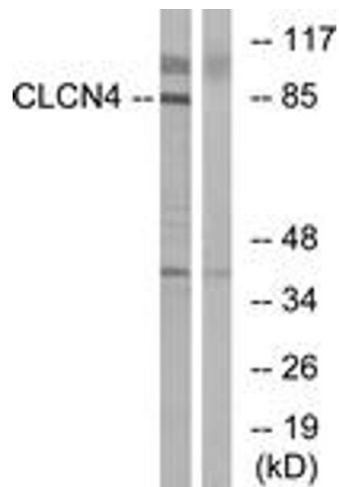
Storage Comment: Stable at -20°C for at least 1 year.

Expiry Date: 12 months



### Immunofluorescence

**Image 1.** Immunofluorescence analysis of HuvEc cells, using CLCN4 Antibody. The picture on the right is treated with the synthesized peptide.



### Western Blotting

**Image 2.** Western blot analysis of extracts from MCF-7 cells, using CLCN4 Antibody. The lane on the right is treated with the synthesized peptide.