

Datasheet for ABIN1534776  
**anti-KIF4A antibody (AA 1171-1220)**



[Go to Product page](#)

1 Image

## Overview

Quantity:	100 µL
Target:	KIF4A
Binding Specificity:	AA 1171-1220
Reactivity:	Human
Host:	Rabbit
Clonality:	Polyclonal
Conjugate:	This KIF4A antibody is un-conjugated
Application:	ELISA, Western Blotting (WB)

## Product Details

Immunogen:	The antiserum was produced against synthesized peptide derived from human KIF4A.
Isotype:	IgG
Specificity:	KIF4A Antibody detects endogenous levels of total KIF4A protein.
Purification:	The antibody was purified from rabbit antiserum by affinity-chromatography using immunogen.
Purity:	> 95 %

## Target Details

Target:	KIF4A
Alternative Name:	KIF4A ( <a href="#">KIF4A Products</a> )
Background:	Synonyms: chromokinesin, chromosome-associated kinesin KIF4A, KIF4, KIF4-G1, kinesin

## Target Details

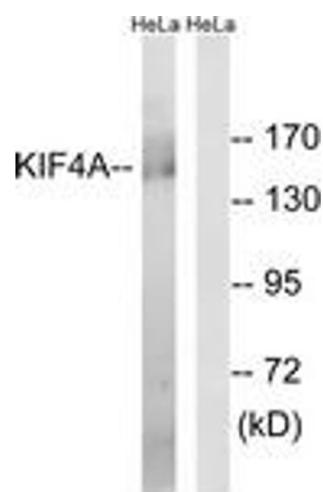
	family member 4, kinesin family member 4A NCBI Gene Symbol: KIF4A
Molecular Weight:	139 kDa
Gene ID:	24137
OMIM:	300521
UniProt:	<a href="#">O95239</a>

## Application Details

Application Notes:	WB: 1:500~1:1000 ELISA: 1:40000
Comment:	Unigene-Number: Hs.648326 (NCBI Gene Symbol: KIF4A)
Restrictions:	For Research Use only

## Handling

Format:	Liquid
Concentration:	1 mg/mL
Buffer:	phosphate buffered saline (without Mg <sup>2+</sup> and Ca <sup>2+</sup> ), pH 7.4, 150 mM NaCl, 0.02 % sodium azide and 50 % glycerol.
Preservative:	Sodium azide
Precaution of Use:	This product contains sodium azide: a POISONOUS AND HAZARDOUS SUBSTANCE which should be handled by trained staff only.
Storage:	-20 °C
Storage Comment:	Stable at -20°C for at least 1 year.
Expiry Date:	12 months



Western Blotting

**Image 1.** Western blot analysis of extracts from HeLa cells, using KIF4A Antibody. The lane on the right is treated with the synthesized peptide.