

Datasheet for ABIN1534781
anti-Claudin 19 antibody (AA 81-130)



[Go to Product page](#)

1 Image

Overview

Quantity:	100 µL
Target:	Claudin 19 (CLDN19)
Binding Specificity:	AA 81-130
Reactivity:	Human, Rat
Host:	Rabbit
Clonality:	Polyclonal
Conjugate:	This Claudin 19 antibody is un-conjugated
Application:	Western Blotting (WB), ELISA

Product Details

Immunogen:	The antiserum was produced against synthesized peptide derived from human CLDN19.
Isotype:	IgG
Specificity:	CLDN19 Antibody detects endogenous levels of total CLDN19 protein.
Purification:	The antibody was purified from rabbit antiserum by affinity-chromatography using immunogen.
Purity:	> 95 %

Target Details

Target:	Claudin 19 (CLDN19)
Alternative Name:	CLDN19 (CLDN19 Products)
Background:	Synonyms: Claudin-19

Target Details

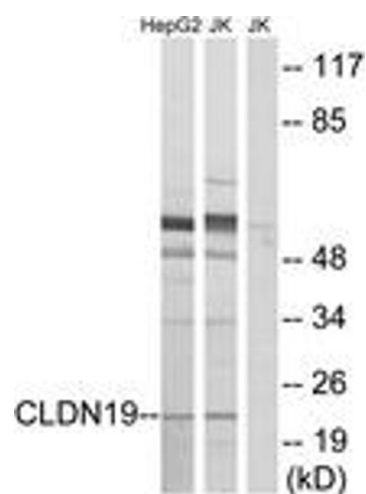
	NCBI Gene Symbol: CLD19
Molecular Weight:	23 kDa
Gene ID:	149461
OMIM:	610036
UniProt:	Q8N6F1
Pathways:	Cell-Cell Junction Organization , Hepatitis C

Application Details

Application Notes:	WB: 1:500~1:1000 ELISA: 1:10000
Comment:	Unigene-Number: Hs.496270 (NCBI Gene Symbol: CLD19)
Restrictions:	For Research Use only

Handling

Format:	Liquid
Concentration:	1 mg/mL
Buffer:	phosphate buffered saline (without Mg ²⁺ and Ca ²⁺), pH 7.4, 150 mM NaCl, 0.02 % sodium azide and 50 % glycerol.
Preservative:	Sodium azide
Precaution of Use:	This product contains sodium azide: a POISONOUS AND HAZARDOUS SUBSTANCE which should be handled by trained staff only.
Storage:	-20 °C
Storage Comment:	Stable at -20°C for at least 1 year.
Expiry Date:	12 months



Western Blotting

Image 1. Western blot analysis of extracts from Jurkat/HepG2 cells, using CLDN19 Antibody. The lane on the right is treated with the synthesized peptide.