

Datasheet for ABIN1534784  
**anti-CSTF2T antibody (AA 91-140)**



[Go to Product page](#)

1 Image

## Overview

|                      |                                       |
|----------------------|---------------------------------------|
| Quantity:            | 100 µL                                |
| Target:              | CSTF2T                                |
| Binding Specificity: | AA 91-140                             |
| Reactivity:          | Human, Mouse, Rat                     |
| Host:                | Rabbit                                |
| Clonality:           | Polyclonal                            |
| Conjugate:           | This CSTF2T antibody is un-conjugated |
| Application:         | Western Blotting (WB), ELISA          |

## Product Details

|               |   |
|---------------|---|
| Immunogen:    | The antiserum was produced against synthesized peptide derived from human CSTF2T.           |
| Isotype:      | IgG   |
| Specificity:  | CSTF2T Antibody detects endogenous levels of total CSTF2T protein.                          |
| Purification: | The antibody was purified from rabbit antiserum by affinity-chromatography using immunogen. |
| Purity:       | > 95 %  |

## Target Details

|                   |   |
|-------------------|---|
| Target:           | CSTF2T  |
| Alternative Name: | CSTF2T ( <a href="#">CSTF2T Products</a> )  |
| Background:       | Synonyms: CF-1 64 kDa subunit, tau variant, cleavage stimulation factor 64 kDa subunit, tau |

## Target Details

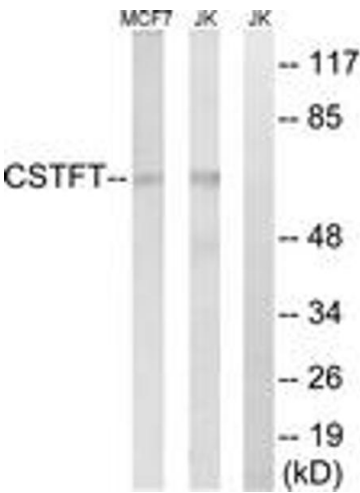
|                   |  |
|-------------------|--|
|                   | variant, cleavage stimulation factor, 3' pre-RNA, subunit 2, 64 kDa, tau variant, CSTF 64 kDa subunit, tau variant, CSTFT, TauCstF-64<br>NCBI Gene Symbol: CSTFT |
| Molecular Weight: | 64 kDa   |
| Gene ID:          | 23283  |
| OMIM:             | 611968   |
| UniProt:          | <a href="#">Q9H0L4</a>   |

## Application Details

|                    |   |
|--------------------|---|
| Application Notes: | WB: 1:500~1:1000 ELISA: 1:40000                     |
| Comment:           | Unigene-Number: Hs.591358 (NCBI Gene Symbol: CSTFT) |
| Restrictions:      | For Research Use only                               |

## Handling

|                    |   |
|--------------------|---|
| Format:            | Liquid  |
| Concentration:     | 1 mg/mL   |
| Buffer:            | phosphate buffered saline (without Mg <sup>2+</sup> and Ca <sup>2+</sup> ), pH 7.4, 150 mM NaCl, 0.02 % sodium azide and 50 % glycerol. |
| Preservative:      | Sodium azide  |
| Precaution of Use: | This product contains sodium azide: a POISONOUS AND HAZARDOUS SUBSTANCE which should be handled by trained staff only.                  |
| Storage:           | -20 °C  |
| Storage Comment:   | Stable at -20°C for at least 1 year.  |
| Expiry Date:       | 12 months   |



Western Blotting

**Image 1.** Western blot analysis of extracts from Jurkat/MCF-7 cells, using CSTF2T Antibody. The lane on the right is treated with the synthesized peptide.