

Datasheet for ABIN1534785

**anti-CLASP1 antibody (AA 1171-1220)**[Go to Product page](#)**2** Images

## Overview

Quantity:	100 µg
Target:	CLASP1
Binding Specificity:	AA 1171-1220
Reactivity:	Human, Mouse
Host:	Rabbit
Clonality:	Polyclonal
Conjugate:	This CLASP1 antibody is un-conjugated
Application:	Western Blotting (WB), Immunohistochemistry (IHC), ELISA

## Product Details

Immunogen:	The antiserum was produced against synthesized peptide derived from human CLASP1.
Isotype:	IgG
Specificity:	CLASP1 Antibody detects endogenous levels of total CLASP1 protein.
Purification:	The antibody was purified from rabbit antiserum by affinity-chromatography using immunogen.
Purity:	> 95 %

## Target Details

Target:	CLASP1
Alternative Name:	CLASP1 ( <a href="#">CLASP1 Products</a> )
Background:	Synonyms: CLAP1, MAST1, Multiple asters 1

## Target Details

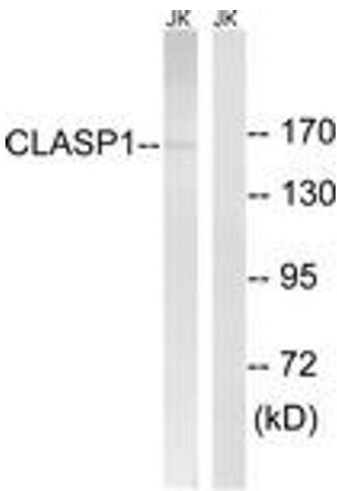
	NCBI Gene Symbol: CLAP1
Molecular Weight:	169 kDa
Gene ID:	23332
OMIM:	605852
UniProt:	<a href="#">Q7Z460</a>
Pathways:	<a href="#">Microtubule Dynamics</a> , <a href="#">M Phase</a> , <a href="#">Maintenance of Protein Location</a>

## Application Details

Application Notes:	WB: 1:500~1:1000 IHC: 1:50~1:100 ELISA: 1:40000
Comment:	Unigene-Number: Hs.469840, Hs.708183 (NCBI Gene Symbol: CLAP1)
Restrictions:	For Research Use only

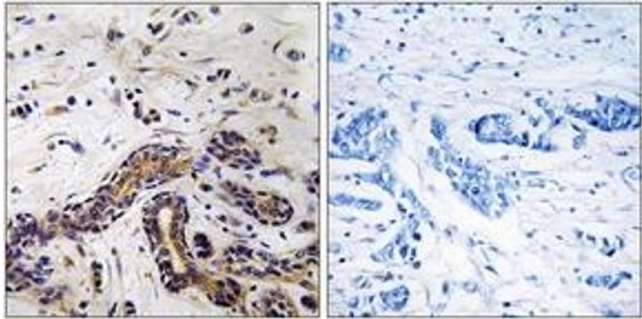
## Handling

Format:	Liquid
Concentration:	1 mg/mL
Buffer:	phosphate buffered saline (without Mg <sup>2+</sup> and Ca <sup>2+</sup> ), pH 7.4, 150 mM NaCl, 0.02 % sodium azide and 50 % glycerol.
Preservative:	Sodium azide
Precaution of Use:	This product contains sodium azide: a POISONOUS AND HAZARDOUS SUBSTANCE which should be handled by trained staff only.
Storage:	-20 °C
Storage Comment:	Stable at -20°C for at least 1 year.
Expiry Date:	12 months



Western Blotting

**Image 1.** Western blot analysis of extracts from Jurkat cells, using CLASP1 Antibody. The lane on the right is treated with the synthesized peptide.



Immunohistochemistry

**Image 2.** Immunohistochemistry analysis of paraffin-embedded human testis tissue, using CLASP1 Antibody. The picture on the right is treated with the synthesized peptide.