

Datasheet for ABIN1534789
anti-COPZ1 antibody (AA 11-60)

2 Images

[Go to Product page](#)

Overview

Quantity:	100 µg
Target:	COPZ1
Binding Specificity:	AA 11-60
Reactivity:	Human, Mouse
Host:	Rabbit
Clonality:	Polyclonal
Conjugate:	This COPZ1 antibody is un-conjugated
Application:	Western Blotting (WB), ELISA, Immunohistochemistry (IHC)

Product Details

Immunogen:	The antiserum was produced against synthesized peptide derived from human COPZ1.
Isotype:	IgG
Specificity:	COPZ1 Antibody detects endogenous levels of total COPZ1 protein.
Purification:	The antibody was purified from rabbit antiserum by affinity-chromatography using immunogen.
Purity:	> 95 %

Target Details

Target:	COPZ1
Alternative Name:	COPZ1 (COPZ1 Products)
Background:	Synonyms: CGI-120, coatomer protein complex, subunit zeta 1, COPZ, zeta1-COP

Target Details

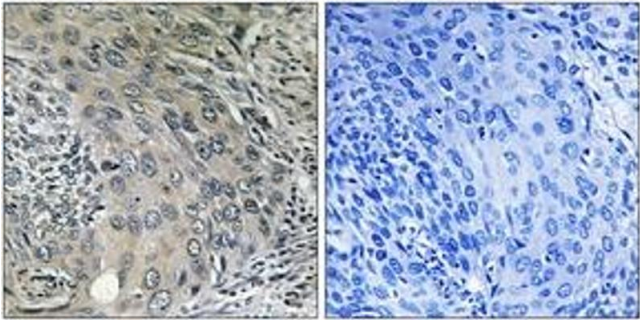
	NCBI Gene Symbol: COPZ1
Molecular Weight:	20 kDa
Gene ID:	22818
UniProt:	P61923

Application Details

Application Notes:	WB: 1:500~1:1000 IHC: 1:50~1:100 ELISA: 1:10000
Comment:	Unigene-Number: Hs.505652 (NCBI Gene Symbol: COPZ1)
Restrictions:	For Research Use only

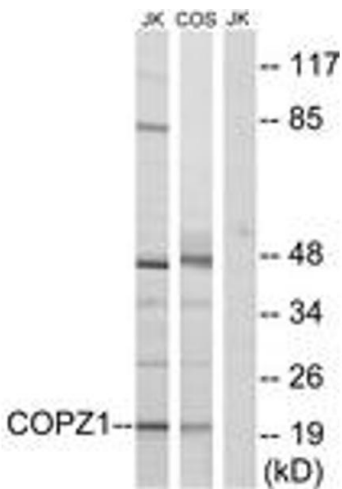
Handling

Format:	Liquid
Concentration:	1 mg/mL
Buffer:	phosphate buffered saline (without Mg2+ and Ca2+), pH 7.4, 150 mM NaCl, 0.02 % sodium azide and 50 % glycerol.
Preservative:	Sodium azide
Precaution of Use:	This product contains sodium azide: a POISONOUS AND HAZARDOUS SUBSTANCE which should be handled by trained staff only.
Storage:	-20 °C
Storage Comment:	Stable at -20°C for at least 1 year.
Expiry Date:	12 months



Immunohistochemistry

Image 1. Immunohistochemistry analysis of paraffin-embedded human cervix carcinoma tissue, using COPZ1 Antibody. The picture on the right is treated with the synthesized peptide.



Western Blotting

Image 2. Western blot analysis of extracts from Jurkat/COS cells, using COPZ1 Antibody. The lane on the right is treated with the synthesized peptide.