

Datasheet for ABIN1534790
anti-CCDC102A antibody (AA 341-390)[Go to Product page](#)

1 Image

Overview

Quantity:	100 µg
Target:	CCDC102A
Binding Specificity:	AA 341-390
Reactivity:	Mouse, Human
Host:	Rabbit
Clonality:	Polyclonal
Conjugate:	This CCDC102A antibody is un-conjugated
Application:	Western Blotting (WB), ELISA

Product Details

Immunogen:	The antiserum was produced against synthesized peptide derived from human CCDC102A.
Isotype:	IgG
Specificity:	CCDC102A Antibody detects endogenous levels of total CCDC102A protein.
Purification:	The antibody was purified from rabbit antiserum by affinity-chromatography using immunogen.
Purity:	> 95 %

Target Details

Target:	CCDC102A
Alternative Name:	CCDC102A (CCDC102A Products)
Background:	Synonyms: Coiled-coil domain-containing protein 102A

Target Details

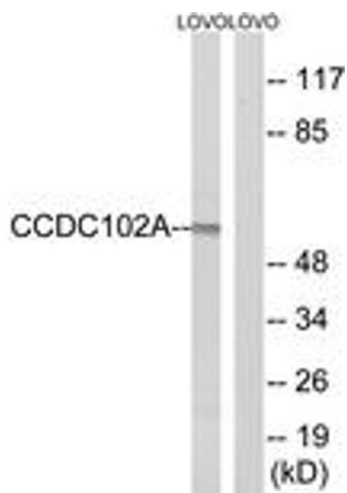
	NCBI Gene Symbol: C102A
Molecular Weight:	62 kDa
Gene ID:	92922
UniProt:	Q96A19

Application Details

Application Notes:	WB: 1:500~1:1000 ELISA: 1:1000
Comment:	Unigene-Number: Hs.644611 (NCBI Gene Symbol: C102A)
Restrictions:	For Research Use only

Handling

Format:	Liquid
Concentration:	1 mg/mL
Buffer:	phosphate buffered saline (without Mg2+ and Ca2+), pH 7.4, 150 mM NaCl, 0.02 % sodium azide and 50 % glycerol.
Preservative:	Sodium azide
Precaution of Use:	This product contains sodium azide: a POISONOUS AND HAZARDOUS SUBSTANCE which should be handled by trained staff only.
Storage:	-20 °C
Storage Comment:	Stable at -20°C for at least 1 year.
Expiry Date:	12 months



Western Blotting

Image 1. Western blot analysis of extracts from LOVO cells, using CCDC102A Antibody. The lane on the right is treated with the synthesized peptide.