

Datasheet for ABIN1534791  
**anti-C1QB antibody (AA 161-210)**

## 2 Images

[Go to Product page](#)

## Overview

Quantity:	100 µg
Target:	C1QB
Binding Specificity:	AA 161-210
Reactivity:	Human
Host:	Rabbit
Clonality:	Polyclonal
Conjugate:	This C1QB antibody is un-conjugated
Application:	Western Blotting (WB), ELISA, Immunofluorescence (IF)

## Product Details

Immunogen:	The antiserum was produced against synthesized peptide derived from human C1QB.
Isotype:	IgG
Specificity:	C1QB Antibody detects endogenous levels of total C1QB protein.
Purification:	The antibody was purified from rabbit antiserum by affinity-chromatography using immunogen.
Purity:	> 95 %

## Target Details

Target:	C1QB
Alternative Name:	C1QB ( <a href="#">C1QB Products</a> )
Background:	Synonyms: Complement C1q subcomponent subunit B

## Target Details

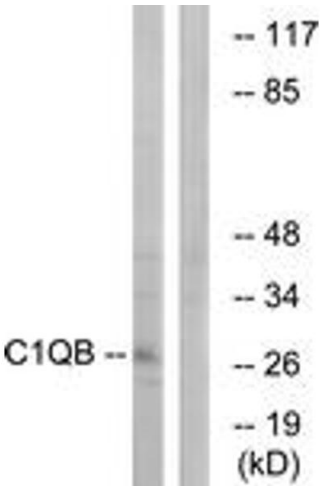
	NCBI Gene Symbol: C1QB
Molecular Weight:	26 kDa
Gene ID:	713
OMIM:	120570
UniProt:	<a href="#">P02746</a>
Pathways:	<a href="#">Complement System</a>

## Application Details

Application Notes:	WB: 1:500~1:1000 IF: 1:100~1:500 ELISA: 1:40000
Comment:	Unigene-Number: Hs.8986 (NCBI Gene Symbol: C1QB)
Restrictions:	For Research Use only

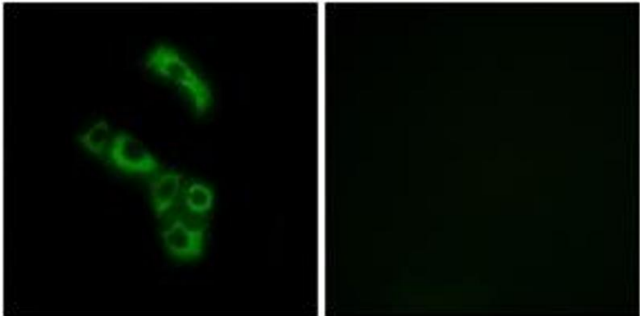
## Handling

Format:	Liquid
Concentration:	1 mg/mL
Buffer:	phosphate buffered saline (without Mg <sup>2+</sup> and Ca <sup>2+</sup> ), pH 7.4, 150 mM NaCl, 0.02 % sodium azide and 50 % glycerol.
Preservative:	Sodium azide
Precaution of Use:	This product contains sodium azide: a POISONOUS AND HAZARDOUS SUBSTANCE which should be handled by trained staff only.
Storage:	-20 °C
Storage Comment:	Stable at -20°C for at least 1 year.
Expiry Date:	12 months



#### Western Blotting

**Image 1.** Western blot analysis of extracts from Jurkat cells, using C1QB Antibody. The lane on the right is treated with the synthesized peptide.



#### Immunofluorescence

**Image 2.** Immunofluorescence analysis of A549 cells, using C1QB Antibody. The picture on the right is treated with the synthesized peptide.