

Datasheet for ABIN1534792
anti-C1QC antibody (AA 81-130)

2 Images

[Go to Product page](#)

Overview

Quantity:	100 µg
Target:	C1QC
Binding Specificity:	AA 81-130
Reactivity:	Human, Mouse, Rat
Host:	Rabbit
Clonality:	Polyclonal
Conjugate:	This C1QC antibody is un-conjugated
Application:	Western Blotting (WB), ELISA, Immunohistochemistry (IHC)

Product Details

Immunogen:	The antiserum was produced against synthesized peptide derived from human C1QC.
Isotype:	IgG
Specificity:	C1QC Antibody detects endogenous levels of total C1QC protein.
Purification:	The antibody was purified from rabbit antiserum by affinity-chromatography using immunogen.
Purity:	> 95 %

Target Details

Target:	C1QC
Alternative Name:	C1QC (C1QC Products)
Background:	Synonyms: Complement C1q subcomponent subunit C

Target Details

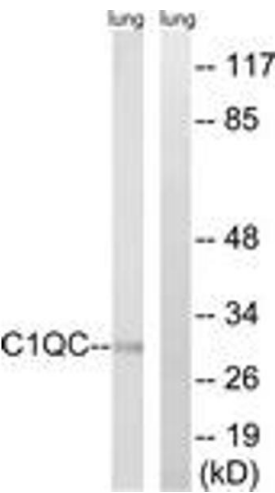
	NCBI Gene Symbol: C1QC
Molecular Weight:	25 kDa
Gene ID:	714
OMIM:	120575
UniProt:	P02747
Pathways:	Complement System

Application Details

Application Notes:	WB: 1:500~1:1000 IHC: 1:50~1:100 ELISA: 1:40000
Comment:	Unigene-Number: Hs.467753 (NCBI Gene Symbol: C1QC)
Restrictions:	For Research Use only

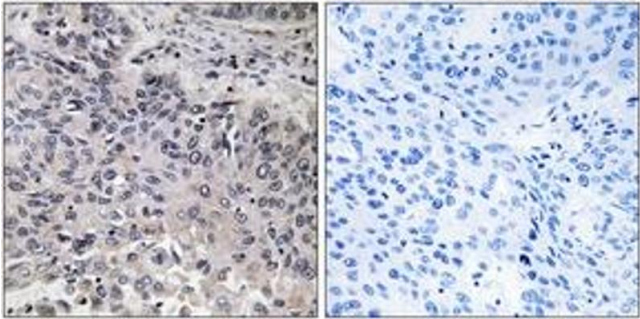
Handling

Format:	Liquid
Concentration:	1 mg/mL
Buffer:	phosphate buffered saline (without Mg ²⁺ and Ca ²⁺), pH 7.4, 150 mM NaCl, 0.02 % sodium azide and 50 % glycerol.
Preservative:	Sodium azide
Precaution of Use:	This product contains sodium azide: a POISONOUS AND HAZARDOUS SUBSTANCE which should be handled by trained staff only.
Storage:	-20 °C
Storage Comment:	Stable at -20°C for at least 1 year.
Expiry Date:	12 months



Western Blotting

Image 1. Western blot analysis of extracts from rat lung cells, using C1QC Antibody. The lane on the right is treated with the synthesized peptide.



Immunohistochemistry

Image 2. Immunohistochemistry analysis of paraffin-embedded human lung carcinoma tissue, using C1QC Antibody. The picture on the right is treated with the synthesized peptide.