

Datasheet for ABIN1534794
anti-C1S antibody (AA 541-590)



[Go to Product page](#)

2 Images

Overview

Quantity:	100 µL
Target:	C1S
Binding Specificity:	AA 541-590
Reactivity:	Human
Host:	Rabbit
Clonality:	Polyclonal
Conjugate:	This C1S antibody is un-conjugated
Application:	Western Blotting (WB), Immunohistochemistry (IHC), ELISA

Product Details

Immunogen:	The antiserum was produced against synthesized peptide derived from human C1S.
Isotype:	IgG
Specificity:	C1S Antibody detects endogenous levels of total C1S protein.
Purification:	The antibody was purified from rabbit antiserum by affinity-chromatography using immunogen.
Purity:	> 95 %

Target Details

Target:	C1S
Alternative Name:	C1S (C1S Products)
Background:	Synonyms: Complement C1s subcomponent, C1 esterase, Complement component 1

Target Details

subcomponent s, Complement C1s subcomponent heavy chain, Complement C1s
subcomponent light chain, C1S
NCBI Gene Symbol: C1S

Molecular Weight: 76 kDa

Gene ID: 716

OMIM: 120580

UniProt: [P09871](#)

Pathways: [Complement System](#)

Application Details

Application Notes: WB: 1:500~1:1000 IHC: 1:50~1:100 ELISA: 1:40000

Comment: Unigene-Number: Hs.458355 (NCBI Gene Symbol: C1S)

Restrictions: For Research Use only

Handling

Format: Liquid

Concentration: 1 mg/mL

Buffer: phosphate buffered saline (without Mg²⁺ and Ca²⁺), pH 7.4, 150 mM NaCl, 0.02 % sodium azide and 50 % glycerol.

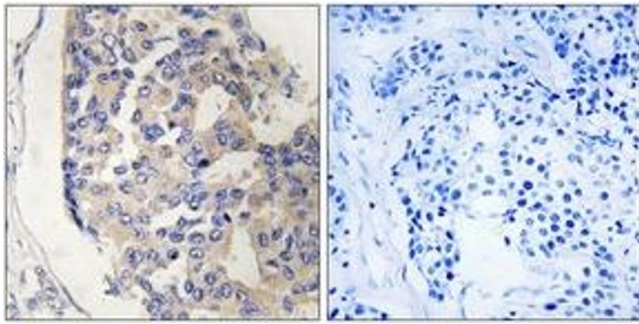
Preservative: Sodium azide

Precaution of Use: This product contains sodium azide: a POISONOUS AND HAZARDOUS SUBSTANCE which should be handled by trained staff only.

Storage: -20 °C

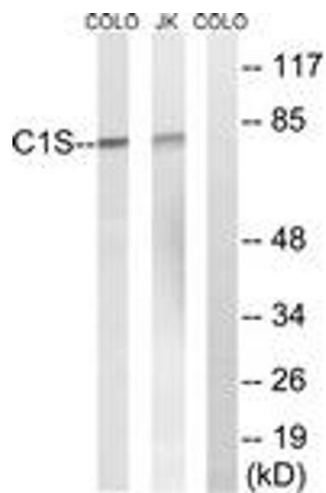
Storage Comment: Stable at -20°C for at least 1 year.

Expiry Date: 12 months



Immunohistochemistry

Image 1. Immunohistochemistry analysis of paraffin-embedded human breast carcinoma tissue, using C1S Antibody. The picture on the right is treated with the synthesized peptide.



Western Blotting

Image 2. Western blot analysis of extracts from Jurkat/COLO cells, using C1S Antibody. The lane on the right is treated with the synthesized peptide.