

Datasheet for ABIN1534795  
**anti-C1QBP antibody (AA 61-110)**



[Go to Product page](#)

2 Images

## Overview

Quantity:	100 µL
Target:	C1QBP
Binding Specificity:	AA 61-110
Reactivity:	Human, Mouse, Rat
Host:	Rabbit
Clonality:	Polyclonal
Conjugate:	This C1QBP antibody is un-conjugated
Application:	Western Blotting (WB), Immunohistochemistry (IHC), ELISA

## Product Details

Immunogen:	The antiserum was produced against synthesized peptide derived from human C1QBP.
Isotype:	IgG
Specificity:	C1QBP Antibody detects endogenous levels of total C1QBP protein.
Purification:	The antibody was purified from rabbit antiserum by affinity-chromatography using immunogen.
Purity:	> 95 %

## Target Details

Target:	C1QBP
Alternative Name:	C1QBP ( <a href="#">C1QBP Products</a> )
Background:	Synonyms: C1q globular domain-binding protein, complement component 1, q subcomponent

## Target Details

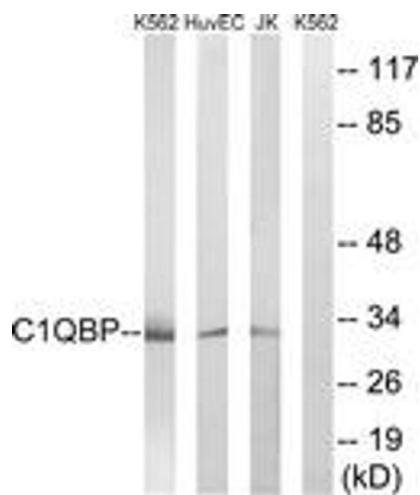
	binding protein, Complement component 1, Q subcomponent binding protein, mitochondrial GC1QBP, gC1Q-R, GC1q-R protein, gC1qR, glycoprotein gC1qBP, HABP1, hyaluronan-binding protei NCBI Gene Symbol: C1QBP
Molecular Weight:	31 kDa
Gene ID:	708
OMIM:	601269
UniProt:	<a href="#">Q07021</a>
Pathways:	<a href="#">Ribonucleoprotein Complex Subunit Organization</a> , <a href="#">Ribosome Assembly</a>

## Application Details

Application Notes:	WB: 1:500~1:1000 IHC: 1:50~1:100 ELISA: 1:40000
Comment:	Unigene-Number: Hs.555866 (NCBI Gene Symbol: C1QBP)
Restrictions:	For Research Use only

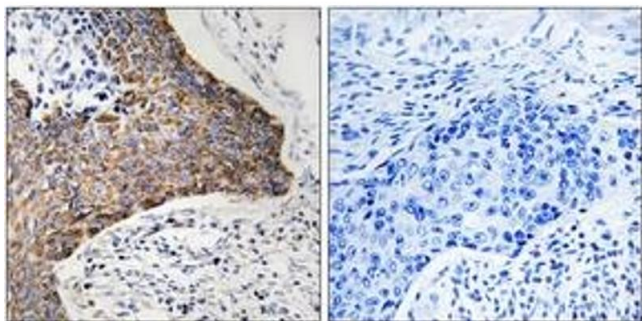
## Handling

Format:	Liquid
Concentration:	1 mg/mL
Buffer:	phosphate buffered saline (without Mg2+ and Ca2+), pH 7.4, 150 mM NaCl, 0.02 % sodium azide and 50 % glycerol.
Preservative:	Sodium azide
Precaution of Use:	This product contains sodium azide: a POISONOUS AND HAZARDOUS SUBSTANCE which should be handled by trained staff only.
Storage:	-20 °C
Storage Comment:	Stable at -20°C for at least 1 year.
Expiry Date:	12 months



### Western Blotting

**Image 1.** Western blot analysis of extracts from Jurkat/HuvEc/K562 cells, using C1QBP Antibody. The lane on the right is treated with the synthesized peptide.



### Immunohistochemistry

**Image 2.** Immunohistochemistry analysis of paraffin-embedded human tonsil tissue, using C1QBP Antibody. The picture on the right is treated with the synthesized peptide.