

Datasheet for ABIN1534809
anti-CSTL1 antibody (AA 61-110)



[Go to Product page](#)

1 Image

Overview

Quantity:	100 µL
Target:	CSTL1
Binding Specificity:	AA 61-110
Reactivity:	Human
Host:	Rabbit
Clonality:	Polyclonal
Conjugate:	This CSTL1 antibody is un-conjugated
Application:	ELISA, Immunofluorescence (IF)

Product Details

Immunogen:	The antiserum was produced against synthesized peptide derived from human CSTL1.
Isotype:	IgG
Specificity:	CSTL1 Antibody detects endogenous levels of total CSTL1 protein.
Purification:	The antibody was purified from rabbit antiserum by affinity-chromatography using immunogen.
Purity:	> 95 %

Target Details

Target:	CSTL1
Alternative Name:	CSTL1 (CSTL1 Products)
Background:	Synonyms: Cystatin-like 1, RCET11

Target Details

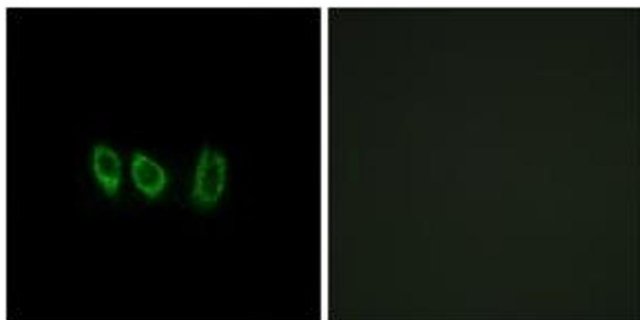
	NCBI Gene Symbol: CST1L
Molecular Weight:	16 kDa
Gene ID:	128817
UniProt:	Q9H114

Application Details

Application Notes:	IF: 1:100~1:500 ELISA: 1:40000
Comment:	Unigene-Number: Hs.352134 (NCBI Gene Symbol: CST1L)
Restrictions:	For Research Use only

Handling

Format:	Liquid
Concentration:	1 mg/mL
Buffer:	phosphate buffered saline (without Mg ²⁺ and Ca ²⁺), pH 7.4, 150 mM NaCl, 0.02 % sodium azide and 50 % glycerol.
Preservative:	Sodium azide
Precaution of Use:	This product contains sodium azide: a POISONOUS AND HAZARDOUS SUBSTANCE which should be handled by trained staff only.
Storage:	-20 °C
Storage Comment:	Stable at -20°C for at least 1 year.
Expiry Date:	12 months



Immunofluorescence

Image 1. Immunofluorescence analysis of A549 cells, using CSTL1 Antibody. The picture on the right is treated with the synthesized peptide.