

Datasheet for ABIN1534811
anti-CST1 antibody (AA 31-80)[Go to Product page](#)

2 Images

Overview

Quantity:	100 µg
Target:	CST1
Binding Specificity:	AA 31-80
Reactivity:	Human
Host:	Rabbit
Clonality:	Polyclonal
Conjugate:	This CST1 antibody is un-conjugated
Application:	Immunohistochemistry (IHC), ELISA, Immunofluorescence (IF)

Product Details

Immunogen:	The antiserum was produced against synthesized peptide derived from human CST1.
Isotype:	IgG
Specificity:	CST1 Antibody detects endogenous levels of total CST1 protein.
Purification:	The antibody was purified from rabbit antiserum by affinity-chromatography using immunogen.
Purity:	> 95 %

Target Details

Target:	CST1
Alternative Name:	CST1 (CST1 Products)
Background:	Synonyms: cystain-SA-I, cystatin-1, cystatin-SN, CYTN, salivary cystatin-SA-1

Target Details

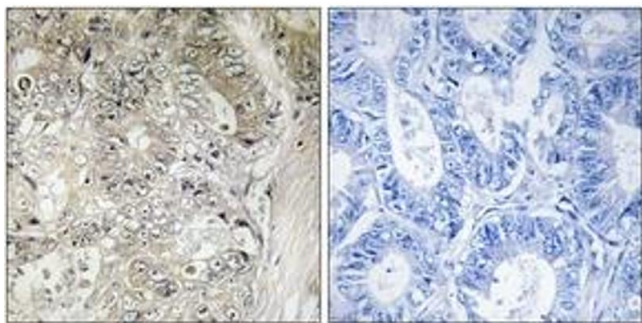
	NCBI Gene Symbol: CYTN
Molecular Weight:	16 kDa
Gene ID:	1469
OMIM:	123855
UniProt:	P01037

Application Details

Application Notes:	IHC: 1:50~1:100 IF: 1:100~1:500 ELISA: 1:20000
Comment:	Unigene-Number: Hs.123114 (NCBI Gene Symbol: CYTN)
Restrictions:	For Research Use only

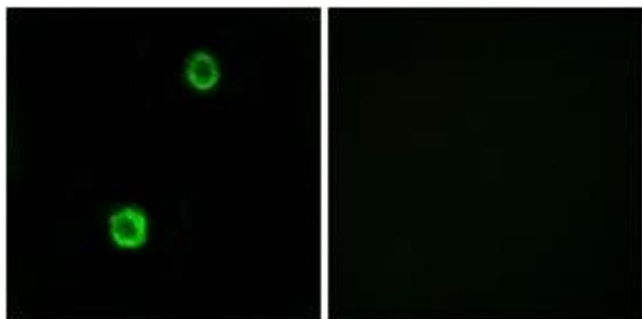
Handling

Format:	Liquid
Concentration:	1 mg/mL
Buffer:	phosphate buffered saline (without Mg ²⁺ and Ca ²⁺), pH 7.4, 150 mM NaCl, 0.02 % sodium azide and 50 % glycerol.
Preservative:	Sodium azide
Precaution of Use:	This product contains sodium azide: a POISONOUS AND HAZARDOUS SUBSTANCE which should be handled by trained staff only.
Storage:	-20 °C
Storage Comment:	Stable at -20°C for at least 1 year.
Expiry Date:	12 months



Immunohistochemistry

Image 1. Immunohistochemistry analysis of paraffin-embedded human colon carcinoma tissue, using CST1 Antibody. The picture on the right is treated with the synthesized peptide.



Immunofluorescence

Image 2. Immunofluorescence analysis of MCF7 cells, using CST1 Antibody. The picture on the right is treated with the synthesized peptide.