

Datasheet for ABIN1534817
anti-AGBL2 antibody (AA 731-780)[Go to Product page](#)

2 Images

Overview

Quantity:	100 µg
Target:	AGBL2
Binding Specificity:	AA 731-780
Reactivity:	Human, Mouse
Host:	Rabbit
Clonality:	Polyclonal
Conjugate:	This AGBL2 antibody is un-conjugated
Application:	ELISA, Western Blotting (WB), Immunohistochemistry (IHC)

Product Details

Immunogen:	The antiserum was produced against synthesized peptide derived from human CBCP2.
Isotype:	IgG
Specificity:	CBCP2 Antibody detects endogenous levels of total CBCP2 protein.
Purification:	The antibody was purified from rabbit antiserum by affinity-chromatography using immunogen.
Purity:	> 95 %

Target Details

Target:	AGBL2
Abstract:	AGBL2 Products
Background:	Synonyms: Cytosolic carboxypeptidase 2, ATP/GTP-binding protein-like 2

Target Details

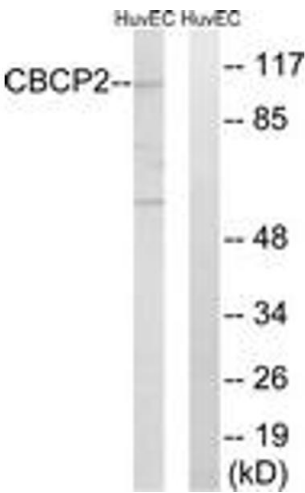
	NCBI Gene Symbol: CBPC2
Molecular Weight:	104 kDa
Gene ID:	79841
UniProt:	Q5U5Z8

Application Details

Application Notes:	WB: 1:500~1:1000 IHC: 1:50~1:100 ELISA: 1:40000
Comment:	Unigene-Number: Hs.147377 (NCBI Gene Symbol: CBPC2)
Restrictions:	For Research Use only

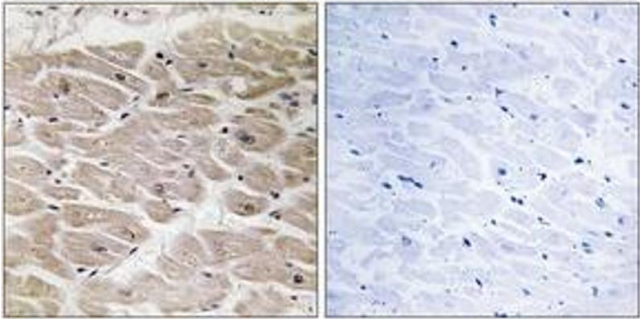
Handling

Format:	Liquid
Concentration:	1 mg/mL
Buffer:	phosphate buffered saline (without Mg2+ and Ca2+), pH 7.4, 150 mM NaCl, 0.02 % sodium azide and 50 % glycerol.
Preservative:	Sodium azide
Precaution of Use:	This product contains sodium azide: a POISONOUS AND HAZARDOUS SUBSTANCE which should be handled by trained staff only.
Storage:	-20 °C
Storage Comment:	Stable at -20°C for at least 1 year.
Expiry Date:	12 months



Western Blotting

Image 1. Western blot analysis of extracts from HuvEc cells, using CBCP2 Antibody. The lane on the right is treated with the synthesized peptide.



Immunohistochemistry

Image 2. Immunohistochemistry analysis of paraffin-embedded human heart tissue, using CBCP2 Antibody. The picture on the right is treated with the synthesized peptide.