

Datasheet for ABIN1534830
anti-DGAT2L6 antibody (AA 271-320)[Go to Product page](#)

1 Image

Overview

Quantity:	100 µg
Target:	DGAT2L6
Binding Specificity:	AA 271-320
Reactivity:	Human
Host:	Rabbit
Clonality:	Polyclonal
Conjugate:	This DGAT2L6 antibody is un-conjugated
Application:	Western Blotting (WB), ELISA

Product Details

Immunogen:	The antiserum was produced against synthesized peptide derived from human DGAT2L6.
Isotype:	IgG
Specificity:	DGAT2L6 Antibody detects endogenous levels of total DGAT2L6 protein.
Purification:	The antibody was purified from rabbit antiserum by affinity-chromatography using immunogen.
Purity:	> 95 %

Target Details

Target:	DGAT2L6
Alternative Name:	DGAT2L6 (DGAT2L6 Products)
Background:	Synonyms: Diacylglycerol O-acyltransferase 2-like protein 6, Diacylglycerol O-acyltransferase

Target Details

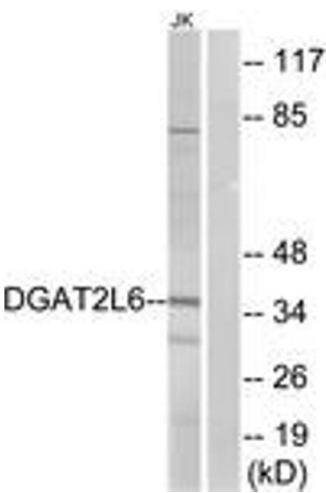
	candidate 3, hDC3 NCBI Gene Symbol: DG2L6
Molecular Weight:	38 kDa
Gene ID:	347516
UniProt:	Q6ZPD8

Application Details

Application Notes:	WB: 1:500~1:1000 ELISA: 1:10000
Comment:	Unigene-Number: Hs.454355 (NCBI Gene Symbol: DG2L6)
Restrictions:	For Research Use only

Handling

Format:	Liquid
Concentration:	1 mg/mL
Buffer:	phosphate buffered saline (without Mg ²⁺ and Ca ²⁺), pH 7.4, 150 mM NaCl, 0.02 % sodium azide and 50 % glycerol.
Preservative:	Sodium azide
Precaution of Use:	This product contains sodium azide: a POISONOUS AND HAZARDOUS SUBSTANCE which should be handled by trained staff only.
Storage:	-20 °C
Storage Comment:	Stable at -20°C for at least 1 year.
Expiry Date:	12 months



Western Blotting

Image 1. Western blot analysis of extracts from Jurkat cells, using DGAT2L6 Antibody. The lane on the right is treated with the synthesized peptide.