



Datasheet for ABIN1534860  
**anti-MARCH2 antibody (AA 191-240)**



[Go to Product page](#)

2 Images

Overview

Quantity:	100 µL
Target:	MARCH2
Binding Specificity:	AA 191-240
Reactivity:	Human
Host:	Rabbit
Clonality:	Polyclonal
Conjugate:	This MARCH2 antibody is un-conjugated
Application:	ELISA, Immunohistochemistry (IHC), Immunofluorescence (IF)

Product Details

Immunogen:	The antiserum was produced against synthesized peptide derived from human MARCH2.
Isotype:	IgG
Specificity:	MARCH2 Antibody detects endogenous levels of total MARCH2 protein.
Purification:	The antibody was purified from rabbit antiserum by affinity-chromatography using immunogen.
Purity:	> 95 %

Target Details

Target:	MARCH2
Alternative Name:	MARCH2 ( <a href="#">MARCH2 Products</a> )
Background:	Synonyms: E3 ubiquitin-protein ligase MARCH2, Membrane-associated RING finger protein 2,

## Target Details

---

Membrane-associated RING-CH protein II, MARCH-II, RING finger protein 172,  
NCBI Gene Symbol: MARH2

Molecular Weight: 26 kDa

Gene ID: 51257

OMIM: 613332

UniProt: [Q9P0N8](#)

## Application Details

---

Application Notes: IHC: 1:50~1:100 IF: 1:100~1:500 ELISA: 1:40000

Comment: Unigene-Number: Hs.631861 (NCBI Gene Symbol: MARH2)

Restrictions: For Research Use only

## Handling

---

Format: Liquid

Concentration: 1 mg/mL

Buffer: phosphate buffered saline (without Mg<sup>2+</sup> and Ca<sup>2+</sup>), pH 7.4, 150 mM NaCl, 0.02 % sodium azide and 50 % glycerol.

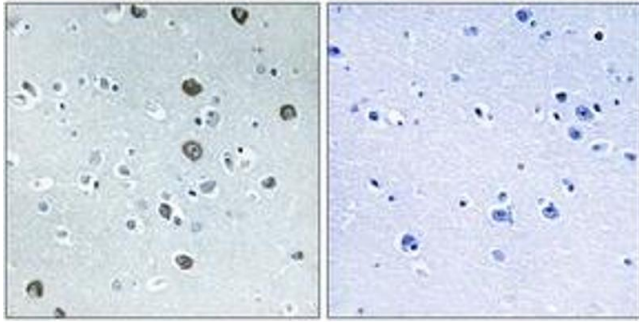
Preservative: Sodium azide

Precaution of Use: This product contains sodium azide: a POISONOUS AND HAZARDOUS SUBSTANCE which should be handled by trained staff only.

Storage: -20 °C

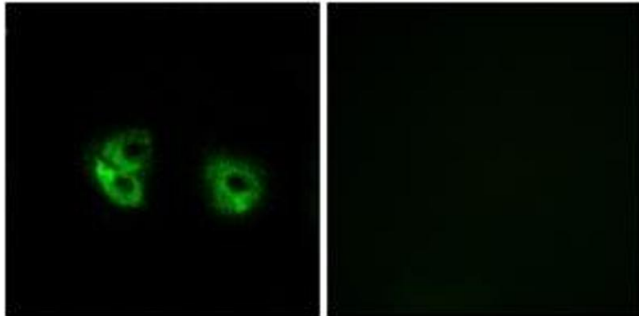
Storage Comment: Stable at -20°C for at least 1 year.

Expiry Date: 12 months



### Immunohistochemistry

**Image 1.** Immunohistochemistry analysis of paraffin-embedded human brain tissue, using MARCH2 Antibody. The picture on the right is treated with the synthesized peptide.



### Immunofluorescence

**Image 2.** Immunofluorescence analysis of A549 cells, using MARCH2 Antibody. The picture on the right is treated with the synthesized peptide.