

Datasheet for ABIN1534875
anti-INSL4 antibody (AA 41-90)

2 Images

[Go to Product page](#)

Overview

Quantity:	100 µg
Target:	INSL4
Binding Specificity:	AA 41-90
Reactivity:	Human
Host:	Rabbit
Clonality:	Polyclonal
Conjugate:	This INSL4 antibody is un-conjugated
Application:	ELISA, Western Blotting (WB), Immunofluorescence (IF)

Product Details

Immunogen:	The antiserum was produced against synthesized peptide derived from human INSL4.
Isotype:	IgG
Specificity:	INSL4 Antibody detects endogenous levels of total INSL4 protein.
Purification:	The antibody was purified from rabbit antiserum by affinity-chromatography using immunogen.
Purity:	> 95 %

Target Details

Target:	INSL4
Alternative Name:	INSL4 (INSL4 Products)
Background:	Synonyms: Early placenta insulin-like peptide, EPIL, Placentin, Insulin-like peptide 4,

Target Details

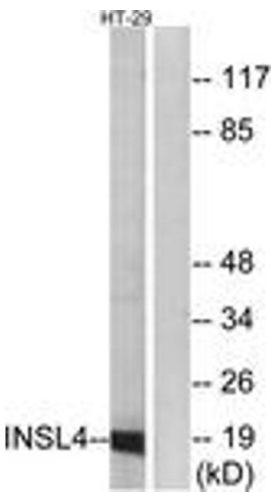
	NCBI Gene Symbol: INSL4
Molecular Weight:	15 kDa
Gene ID:	3641
OMIM:	600910
UniProt:	Q14641

Application Details

Application Notes:	WB: 1:500~1:1000 IF: 1:100~1:500 ELISA: 1:20000
Comment:	Unigene-Number: Hs.418506 (NCBI Gene Symbol: INSL4)
Restrictions:	For Research Use only

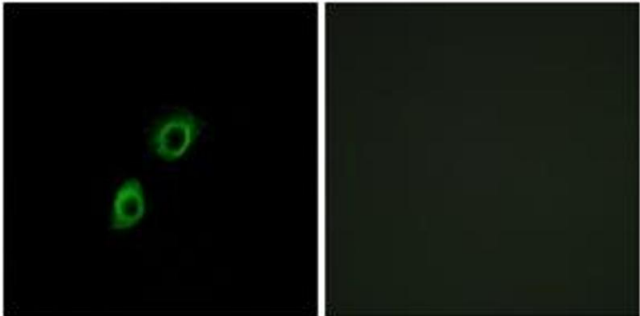
Handling

Format:	Liquid
Concentration:	1 mg/mL
Buffer:	phosphate buffered saline (without Mg ²⁺ and Ca ²⁺), pH 7.4, 150 mM NaCl, 0.02 % sodium azide and 50 % glycerol.
Preservative:	Sodium azide
Precaution of Use:	This product contains sodium azide: a POISONOUS AND HAZARDOUS SUBSTANCE which should be handled by trained staff only.
Storage:	-20 °C
Storage Comment:	Stable at -20°C for at least 1 year.
Expiry Date:	12 months



Western Blotting

Image 1. Western blot analysis of extracts from HT-29 cells, using INSL4 Antibody. The lane on the right is treated with the synthesized peptide.



Immunofluorescence

Image 2. Immunofluorescence analysis of A549 cells, using INSL4 Antibody. The picture on the right is treated with the synthesized peptide.