

Datasheet for ABIN1534878
anti-FBLN4 antibody (AA 91-140)

3 Images

[Go to Product page](#)

Overview

Quantity:	100 µg
Target:	FBLN4
Binding Specificity:	AA 91-140
Reactivity:	Human
Host:	Rabbit
Clonality:	Polyclonal
Conjugate:	This FBLN4 antibody is un-conjugated
Application:	Western Blotting (WB), Immunohistochemistry (IHC), ELISA, Immunofluorescence (IF)

Product Details

Immunogen:	The antiserum was produced against synthesized peptide derived from human EFEMP2.
Isotype:	IgG
Specificity:	EFEMP2 Antibody detects endogenous levels of total EFEMP2 protein.
Purification:	The antibody was purified from rabbit antiserum by affinity-chromatography using immunogen.
Purity:	> 95 %

Target Details

Target:	FBLN4
Alternative Name:	EFEMP2 (FBLN4 Products)
Background:	Synonyms: EGF-containing fibulin-like extracellular matrix protein 2, Fibulin-4, FIBL-4, UPH1

Target Details

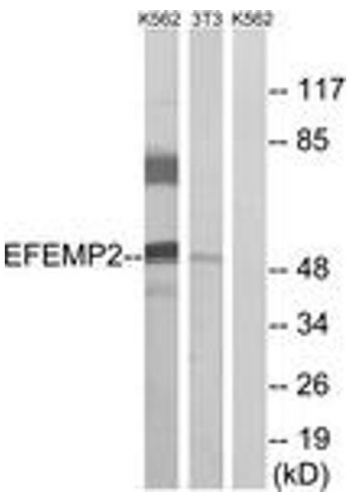
	protein NCBI Gene Symbol: FBLN4
Molecular Weight:	49 kDa
Gene ID:	30008
OMIM:	219100
UniProt:	O95967

Application Details

Application Notes:	WB: 1:500~1:1000 IHC: 1:50~1:100 IF: 1:100~1:500 ELISA: 1:10000
Comment:	Unigene-Number: Hs.719933 (NCBI Gene Symbol: FBLN4)
Restrictions:	For Research Use only

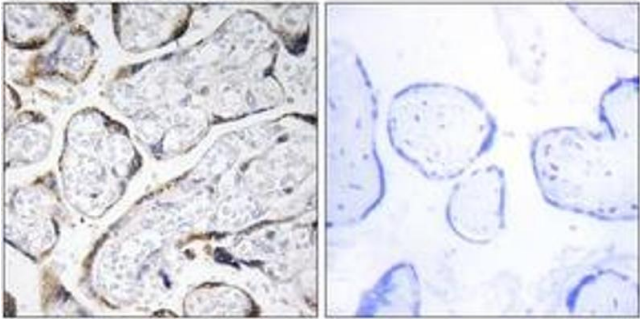
Handling

Format:	Liquid
Concentration:	1 mg/mL
Buffer:	phosphate buffered saline (without Mg ²⁺ and Ca ²⁺), pH 7.4, 150 mM NaCl, 0.02 % sodium azide and 50 % glycerol.
Preservative:	Sodium azide
Precaution of Use:	This product contains sodium azide: a POISONOUS AND HAZARDOUS SUBSTANCE which should be handled by trained staff only.
Storage:	-20 °C
Storage Comment:	Stable at -20°C for at least 1 year.
Expiry Date:	12 months



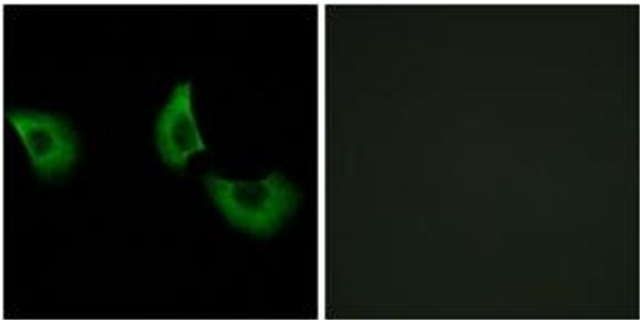
Western Blotting

Image 1. Western blot analysis of extracts from K562/NIH-3T3 cells, using EFEMP2 Antibody. The lane on the right is treated with the synthesized peptide.



Immunohistochemistry

Image 2. Immunohistochemistry analysis of paraffin-embedded human placenta tissue, using EFEMP2 Antibody. The picture on the right is treated with the synthesized peptide.



Immunofluorescence

Image 3. Immunofluorescence analysis of A549 cells, using EFEMP2 Antibody. The picture on the right is treated with the synthesized peptide.