



[Go to Product page](#)

Datasheet for ABIN1534884  
**anti-ELOVL3 antibody (AA 31-80)**

1 Image

### Overview

Quantity:	100 µg
Target:	ELOVL3
Binding Specificity:	AA 31-80
Reactivity:	Human
Host:	Rabbit
Clonality:	Polyclonal
Conjugate:	This ELOVL3 antibody is un-conjugated
Application:	ELISA, Immunohistochemistry (IHC)

### Product Details

Immunogen:	The antiserum was produced against synthesized peptide derived from human ELOVL3.
Isotype:	IgG
Specificity:	ELOVL3 Antibody detects endogenous levels of total ELOVL3 protein.
Purification:	The antibody was purified from rabbit antiserum by affinity-chromatography using immunogen.
Purity:	> 95 %

### Target Details

Target:	ELOVL3
Alternative Name:	ELOVL3 ( <a href="#">ELOVL3 Products</a> )
Background:	Synonyms: Elongation of very long chain fatty acids protein 3, Cold-inducible glycoprotein of 30

## Target Details

---

kDa,  
NCBI Gene Symbol: ELOVL3

Molecular Weight: 31 kDa

Gene ID: 83401

UniProt: [Q9HB03](#)

## Application Details

---

Application Notes: IHC: 1:50~1:100 ELISA: 1:20000

Comment: Unigene-Number: Hs.137568, Hs.302130 (NCBI Gene Symbol: ELOVL3)

Restrictions: For Research Use only

## Handling

---

Format: Liquid

Concentration: 1 mg/mL

Buffer: phosphate buffered saline (without Mg<sup>2+</sup> and Ca<sup>2+</sup>), pH 7.4, 150 mM NaCl, 0.02 % sodium azide and 50 % glycerol.

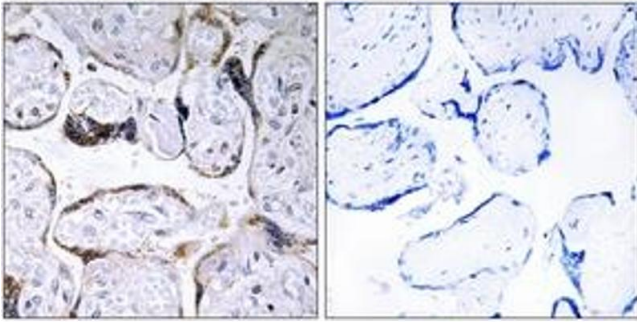
Preservative: Sodium azide

Precaution of Use: This product contains sodium azide: a POISONOUS AND HAZARDOUS SUBSTANCE which should be handled by trained staff only.

Storage: -20 °C

Storage Comment: Stable at -20°C for at least 1 year.

Expiry Date: 12 months



### Immunohistochemistry

**Image 1.** Immunohistochemistry analysis of paraffin-embedded human placenta, using ELOVL3 Antibody. The picture on the right is treated with the synthesized peptide.