



[Go to Product page](#)

Datasheet for ABIN1534886
anti-ELOVL5 antibody (AA 250-299)

2 Images

Overview

Quantity:	100 µg
Target:	ELOVL5
Binding Specificity:	AA 250-299
Reactivity:	Human
Host:	Rabbit
Clonality:	Polyclonal
Conjugate:	This ELOVL5 antibody is un-conjugated
Application:	Western Blotting (WB), ELISA, Immunohistochemistry (IHC)

Product Details

Immunogen:	The antiserum was produced against synthesized peptide derived from human ELOVL5.
Isotype:	IgG
Specificity:	ELOVL5 Antibody detects endogenous levels of total ELOVL5 protein.
Purification:	The antibody was purified from rabbit antiserum by affinity-chromatography using immunogen.
Purity:	> 95 %

Target Details

Target:	ELOVL5
Alternative Name:	ELOVL5 (ELOVL5 Products)
Background:	Synonyms: Elongation of very long chain fatty acids protein 5,hELO1,

Target Details

NCBI Gene Symbol: ELOV5

Molecular Weight: 35 kDa

Gene ID: 60481

OMIM: 611805

UniProt: [Q9NYP7](#)

Application Details

Application Notes: WB: 1:500~1:1000 IHC: 1:50~1:100 ELISA: 1:40000

Comment: Unigene-Number: Hs.520189 (NCBI Gene Symbol: ELOV5)

Restrictions: For Research Use only

Handling

Format: Liquid

Concentration: 1 mg/mL

Buffer: phosphate buffered saline (without Mg²⁺ and Ca²⁺), pH 7.4, 150 mM NaCl, 0.02 % sodium azide and 50 % glycerol.

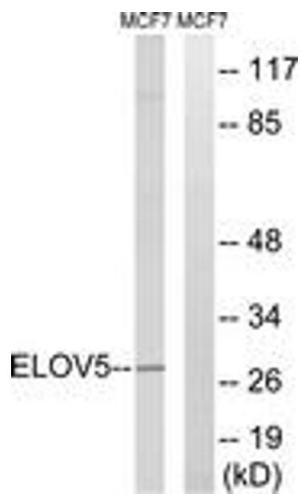
Preservative: Sodium azide

Precaution of Use: This product contains sodium azide: a POISONOUS AND HAZARDOUS SUBSTANCE which should be handled by trained staff only.

Storage: -20 °C

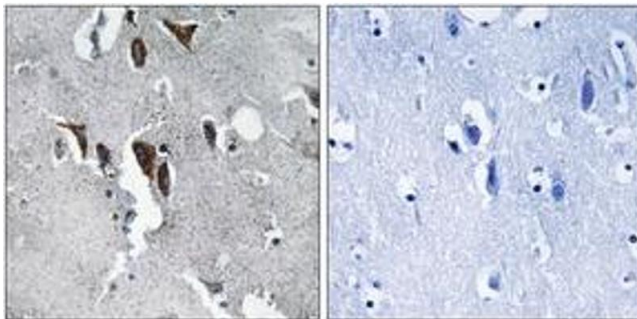
Storage Comment: Stable at -20°C for at least 1 year.

Expiry Date: 12 months



Western Blotting

Image 1. Western blot analysis of extracts from MCF-7 cells, using ELOVL5 Antibody. The lane on the right is treated with the synthesized peptide.



Immunohistochemistry

Image 2. Immunohistochemistry analysis of paraffin-embedded human brain tissue, using ELOVL5 Antibody. The picture on the right is treated with the synthesized peptide.