



[Go to Product page](#)

Datasheet for ABIN1534893
anti-EPN3 antibody (AA 401-450)

2 Images

Overview

Quantity:	100 µg
Target:	EPN3
Binding Specificity:	AA 401-450
Reactivity:	Human
Host:	Rabbit
Clonality:	Polyclonal
Conjugate:	This EPN3 antibody is un-conjugated
Application:	ELISA, Western Blotting (WB), Immunohistochemistry (IHC)

Product Details

Immunogen:	The antiserum was produced against synthesized peptide derived from human EPN3.
Isotype:	IgG
Specificity:	EPN3 Antibody detects endogenous levels of total EPN3 protein.
Purification:	The antibody was purified from rabbit antiserum by affinity-chromatography using immunogen.
Purity:	> 95 %

Target Details

Target:	EPN3
Alternative Name:	EPN3 (EPN3 Products)
Background:	Synonyms: Epsin-3, EPS-15-interacting protein 3

Target Details

NCBI Gene Symbol: EPN3

Molecular Weight: 68 kDa

Gene ID: 55040

OMIM: 607264

UniProt: [Q9H201](#)

Application Details

Application Notes: WB: 1:500~1:1000 IHC: 1:50~1:100 ELISA: 1:10000

Comment: Unigene-Number: Hs.670090 (NCBI Gene Symbol: EPN3)

Restrictions: For Research Use only

Handling

Format: Liquid

Concentration: 1 mg/mL

Buffer: phosphate buffered saline (without Mg²⁺ and Ca²⁺), pH 7.4, 150 mM NaCl, 0.02 % sodium azide and 50 % glycerol.

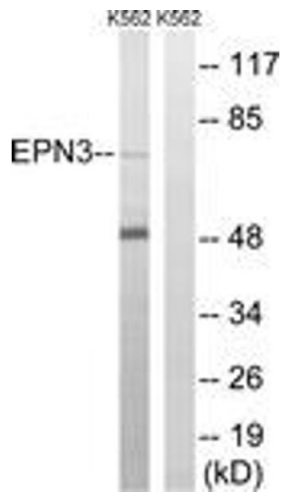
Preservative: Sodium azide

Precaution of Use: This product contains sodium azide: a POISONOUS AND HAZARDOUS SUBSTANCE which should be handled by trained staff only.

Storage: -20 °C

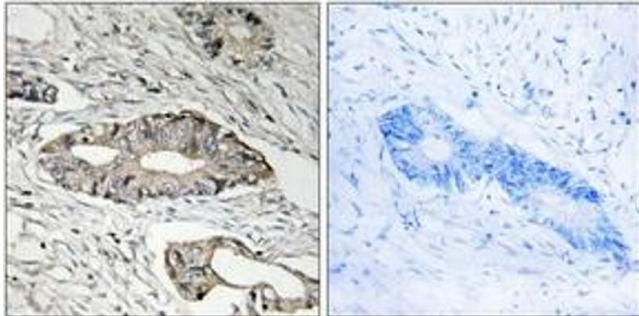
Storage Comment: Stable at -20°C for at least 1 year.

Expiry Date: 12 months



Western Blotting

Image 1. Western blot analysis of extracts from K562 cells, using EPN3 Antibody. The lane on the right is treated with the synthesized peptide.



Immunohistochemistry

Image 2. Immunohistochemistry analysis of paraffin-embedded human colon carcinoma tissue, using EPN3 Antibody. The picture on the right is treated with the synthesized peptide.