



[Go to Product page](#)

Datasheet for ABIN1534895  
**anti-KDEL3 antibody (AA 61-110)**

1 Image

### Overview

Quantity:	100 µg
Target:	KDEL3 (KDEL3)
Binding Specificity:	AA 61-110
Reactivity:	Human, Mouse
Host:	Rabbit
Clonality:	Polyclonal
Conjugate:	This KDEL3 antibody is un-conjugated
Application:	Western Blotting (WB), ELISA

### Product Details

Immunogen:	The antiserum was produced against synthesized peptide derived from human ERD23.
Isotype:	IgG
Specificity:	ERD23 Antibody detects endogenous levels of total ERD23 protein.
Purification:	The antibody was purified from rabbit antiserum by affinity-chromatography using immunogen.
Purity:	> 95 %

### Target Details

Target:	KDEL3 (KDEL3)
Abstract:	<a href="#">kDEL3 Products</a>
Background:	Synonyms: ER lumen protein retaining receptor 3'KDEL receptor 3, KDEL endoplasmic reticulum

## Target Details

---

protein retention receptor 3

NCBI Gene Symbol: ERD23

Molecular Weight: 25 kDa

Gene ID: 11015

UniProt: [O43731](#)

Pathways: [ER-Nucleus Signaling, Maintenance of Protein Location](#)

## Application Details

---

Application Notes: WB: 1:500~1:1000 ELISA: 1:20000

Comment: Unigene-Number: Hs.720434. (NCBI Gene Symbol: ERD23)

Restrictions: For Research Use only

## Handling

---

Format: Liquid

Concentration: 1 mg/mL

Buffer: phosphate buffered saline (without Mg<sup>2+</sup> and Ca<sup>2+</sup>), pH 7.4, 150 mM NaCl, 0.02 % sodium azide and 50 % glycerol.

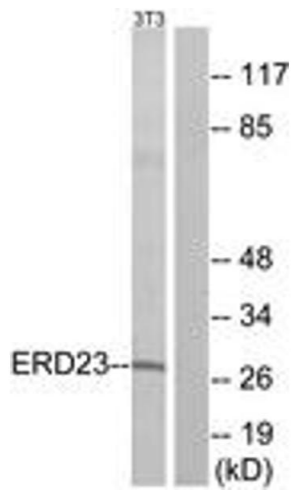
Preservative: Sodium azide

Precaution of Use: This product contains sodium azide: a POISONOUS AND HAZARDOUS SUBSTANCE which should be handled by trained staff only.

Storage: -20 °C

Storage Comment: Stable at -20°C for at least 1 year.

Expiry Date: 12 months



### Western Blotting

**Image 1.** Western blot analysis of extracts from NIH-3T3 cells, using ERD23 Antibody. The lane on the right is treated with the synthesized peptide.