

Datasheet for ABIN1534899  
**anti-EIF3F antibody (AA 81-130)**

## 2 Images

[Go to Product page](#)

## Overview

Quantity:	100 µg
Target:	EIF3F
Binding Specificity:	AA 81-130
Reactivity:	Human, Mouse, Rat
Host:	Rabbit
Clonality:	Polyclonal
Conjugate:	This EIF3F antibody is un-conjugated
Application:	Western Blotting (WB), Immunohistochemistry (IHC), ELISA

## Product Details

Immunogen:	The antiserum was produced against synthesized peptide derived from human EIF3F.
Isotype:	IgG
Specificity:	EIF3F Antibody detects endogenous levels of total EIF3F protein.
Purification:	The antibody was purified from rabbit antiserum by affinity-chromatography using immunogen.
Purity:	> 95 %

## Target Details

Target:	EIF3F
Alternative Name:	EIF3F ( <a href="#">EIF3F Products</a> )
Background:	Synonyms: Eukaryotic translation initiation factor 3 subunit F, Eukaryotic translation initiation

## Target Details

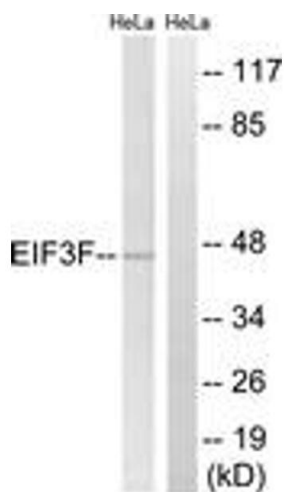
	factor 3 subunit 5, eIF-3-epsilon, eIF3 p47 subunit, eIF3f, NCBI Gene Symbol: IF35
Molecular Weight:	37 kDa
Gene ID:	8665
OMIM:	603914
UniProt:	<a href="#">O00303</a>
Pathways:	<a href="#">Ribonucleoprotein Complex Subunit Organization</a>

## Application Details

Application Notes:	WB: 1:500~1:1000 IHC: 1:50~1:100 ELISA: 1:40000
Comment:	Unigene-Number: Hs.516023 (NCBI Gene Symbol: IF35)
Restrictions:	For Research Use only

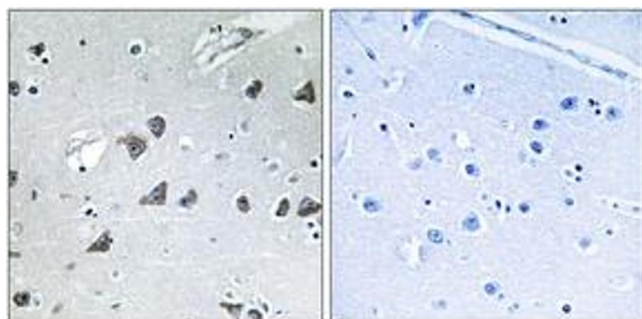
## Handling

Format:	Liquid
Concentration:	1 mg/mL
Buffer:	phosphate buffered saline (without Mg <sup>2+</sup> and Ca <sup>2+</sup> ), pH 7.4, 150 mM NaCl, 0.02 % sodium azide and 50 % glycerol.
Preservative:	Sodium azide
Precaution of Use:	This product contains sodium azide: a POISONOUS AND HAZARDOUS SUBSTANCE which should be handled by trained staff only.
Storage:	-20 °C
Storage Comment:	Stable at -20°C for at least 1 year.
Expiry Date:	12 months



#### Western Blotting

**Image 1.** Western blot analysis of extracts from HeLa cells, using EIF3F Antibody. The lane on the right is treated with the synthesized peptide.



#### Immunohistochemistry

**Image 2.** Immunohistochemistry analysis of paraffin-embedded human brain tissue, using EIF3F Antibody. The picture on the right is treated with the synthesized peptide.