



[Go to Product page](#)

Datasheet for ABIN1534900
anti-EIF3D antibody (AA 101-150)

2 Images

Overview

Quantity:	100 µL
Target:	EIF3D
Binding Specificity:	AA 101-150
Reactivity:	Human, Mouse
Host:	Rabbit
Clonality:	Polyclonal
Conjugate:	This EIF3D antibody is un-conjugated
Application:	Western Blotting (WB), Immunohistochemistry (IHC), ELISA

Product Details

Immunogen:	The antiserum was produced against synthesized peptide derived from human EIF3D.
Isotype:	IgG
Specificity:	EIF3D Antibody detects endogenous levels of total EIF3D protein.
Purification:	The antibody was purified from rabbit antiserum by affinity-chromatography using immunogen.
Purity:	> 95 %

Target Details

Target:	EIF3D
Alternative Name:	EIF3D (EIF3D Products)
Background:	Synonyms: Eukaryotic translation initiation factor 3 subunit D, Eukaryotic translation initiation

Target Details

factor 3 subunit 7, eIF-3-zeta, eIF3 p66, eIF3d
NCBI Gene Symbol: IF37

Molecular Weight: 63 kDa

Gene ID: 8664

OMIM: 603915

UniProt: [O15371](#)

Pathways: [Ribonucleoprotein Complex Subunit Organization](#)

Application Details

Application Notes: WB: 1:500~1:1000 IHC: 1:50~1:100 ELISA: 1:40000

Comment: Unigene-Number: Hs.55682 (NCBI Gene Symbol: IF37)

Restrictions: For Research Use only

Handling

Format: Liquid

Concentration: 1 mg/mL

Buffer: phosphate buffered saline (without Mg²⁺ and Ca²⁺), pH 7.4, 150 mM NaCl, 0.02 % sodium azide and 50 % glycerol.

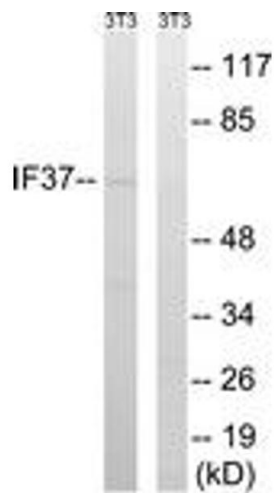
Preservative: Sodium azide

Precaution of Use: This product contains sodium azide: a POISONOUS AND HAZARDOUS SUBSTANCE which should be handled by trained staff only.

Storage: -20 °C

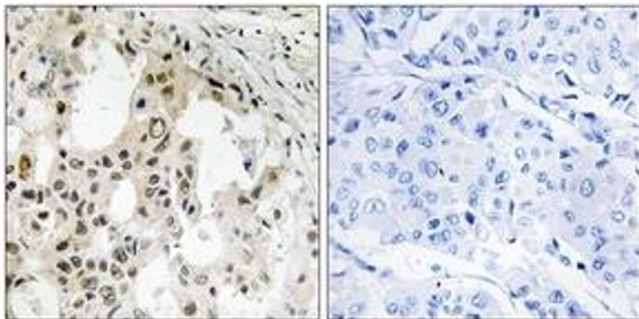
Storage Comment: Stable at -20°C for at least 1 year.

Expiry Date: 12 months



Western Blotting

Image 1. Western blot analysis of extracts from NIH-3T3 cells, using EIF3D Antibody. The lane on the right is treated with the synthesized peptide.



Immunohistochemistry

Image 2. Immunohistochemistry analysis of paraffin-embedded human breast carcinoma tissue, using EIF3D Antibody. The picture on the right is treated with the synthesized peptide.