



[Go to Product page](#)

Datasheet for ABIN1534909

anti-FOXD4/L2/L3/L4/L5/L6 antibody (AA 281-330)

1 Image

Overview

Quantity:	100 µg
Target:	FOXD4/L2/L3/L4/L5/L6
Binding Specificity:	AA 281-330
Reactivity:	Human
Host:	Rabbit
Clonality:	Polyclonal
Conjugate:	This FOXD4/L2/L3/L4/L5/L6 antibody is un-conjugated
Application:	ELISA, Western Blotting (WB)

Product Details

Immunogen:	The antiserum was produced against synthesized peptide derived from human FOXD4/L2/L3/L4/L5/L6.
Isotype:	IgG
Specificity:	FOXD4/L2/L3/L4/L5/L6 Antibody detects endogenous levels of total FOXD4/L2/L3/L4/L5/L6 protein.
Purification:	The antibody was purified from rabbit antiserum by affinity-chromatography using immunogen.
Purity:	> 95 %

Target Details

Target:	FOXD4/L2/L3/L4/L5/L6
---------	----------------------

Target Details

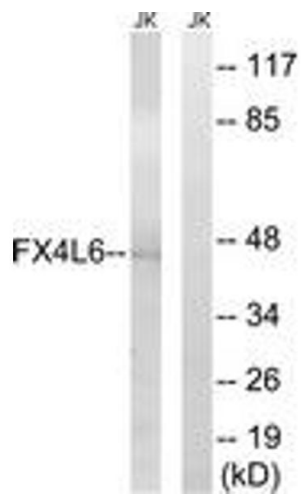
Abstract:	FOXD4/L2/L3/L4/L5/L6 Products
Background:	Synonyms: Forkhead box protein D4-like 6, FOXD4-like 6, NCBI Gene Symbol: FX4L6
Molecular Weight:	45 kDa
Gene ID:	653404, 2298, 100036519
OMIM:	601092
UniProt:	Q3SYB3 , Q12950 , Q8WXT5 , Q5VV16 , Q6VB85 , Q6VB84

Application Details

Application Notes:	WB: 1:500~1:1000 ELISA: 1:40000
Comment:	Unigene-Number: Hs.652377, Hs.584759, Hs.534644, Hs.712520, Hs.652377, Hs.714683, Hs.449471 (NCBI Gene Symbol: FX4L6)
Restrictions:	For Research Use only

Handling

Format:	Liquid
Concentration:	1 mg/mL
Buffer:	phosphate buffered saline (without Mg ²⁺ and Ca ²⁺), pH 7.4, 150 mM NaCl, 0.02 % sodium azide and 50 % glycerol.
Preservative:	Sodium azide
Precaution of Use:	This product contains sodium azide: a POISONOUS AND HAZARDOUS SUBSTANCE which should be handled by trained staff only.
Storage:	-20 °C
Storage Comment:	Stable at -20°C for at least 1 year.
Expiry Date:	12 months



Western Blotting

Image 1. Western blot analysis of extracts from Jurkat cells, using FOXD4/L2/L3/L4/L5/L6 Antibody. The lane on the right is treated with the synthesized peptide.