



[Go to Product page](#)

Datasheet for ABIN1534912  
**anti-FOXR1 antibody (AA 231-280)**

1 Image

### Overview

Quantity:	100 µL
Target:	FOXR1
Binding Specificity:	AA 231-280
Reactivity:	Human, Mouse
Host:	Rabbit
Clonality:	Polyclonal
Conjugate:	This FOXR1 antibody is un-conjugated
Application:	Western Blotting (WB), ELISA

### Product Details

Immunogen:	The antiserum was produced against synthesized peptide derived from human FOXR1.
Isotype:	IgG
Specificity:	FOXR1 Antibody detects endogenous levels of total FOXR1 protein.
Purification:	The antibody was purified from rabbit antiserum by affinity-chromatography using immunogen.
Purity:	> 95 %

### Target Details

Target:	FOXR1
Alternative Name:	FOXR1 ( <a href="#">FOXR1 Products</a> )
Background:	Synonyms: Forkhead box protein R1, Forkhead box protein N5,

## Target Details

---

NCBI Gene Symbol: FOXR1

Molecular Weight: 33 kDa

Gene ID: 283150

UniProt: [Q6PIV2](#)

## Application Details

---

Application Notes: WB: 1:500~1:1000 ELISA: 1:20000

Comment: Unigene-Number: Hs.116679 (NCBI Gene Symbol: FOXR1)

Restrictions: For Research Use only

## Handling

---

Format: Liquid

Concentration: 1 mg/mL

Buffer: phosphate buffered saline (without Mg<sup>2+</sup> and Ca<sup>2+</sup>), pH 7.4, 150 mM NaCl, 0.02 % sodium azide and 50 % glycerol.

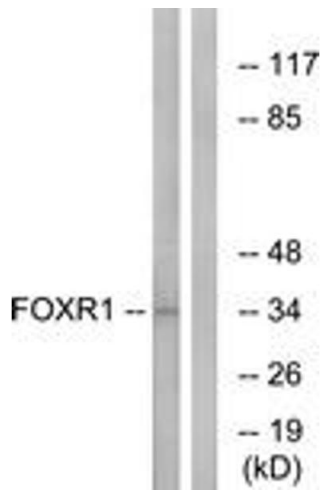
Preservative: Sodium azide

Precaution of Use: This product contains sodium azide: a POISONOUS AND HAZARDOUS SUBSTANCE which should be handled by trained staff only.

Storage: -20 °C

Storage Comment: Stable at -20°C for at least 1 year.

Expiry Date: 12 months



### Western Blotting

**Image 1.** Western blot analysis of extracts from HeLa cells, using FOXR1 Antibody. The lane on the right is treated with the synthesized peptide.